



NOKIA
E62

NOKIA
Connecting People

Nokia and Nokia Connecting People are registered trademarks of Nokia Corporation

Nokia E62 Printing guide

Legal Notice

Copyright © Nokia 2006. All rights reserved.

Reproduction, transfer, distribution or storage of part or all of the contents in this document in any form without the prior written permission of Nokia is prohibited.

Nokia and Nokia Connecting People are registered trademarks of Nokia Corporation. Other product and company names mentioned herein may be trademarks or trade names of their respective owners.

Nokia operates a policy of continuous development. Nokia reserves the right to make changes and improvements to any of the products described in this document without prior notice.

Under no circumstances shall Nokia be responsible for any loss of data or income or any special, incidental, consequential or indirect damages howsoever caused.

The contents of this document are provided "as is". Except as required by applicable law, no warranties of any kind, either express or implied, including, but not limited to, the implied warranties of merchantability and fitness for a particular purpose, are made in relation to the accuracy, reliability or contents of this document. Nokia reserves the right to revise this document or withdraw it at any time without prior notice.

Introduction

Your Nokia E62 includes drivers for certain Hewlett-Packard printers, allowing you to print to compatible Hewlett-Packard printers. Printing to other Hewlett-Packard printer models, and printers of other manufacturers may not be possible.

You can use your Nokia E62 to print different kinds of items, such as documents, messages, images, and Web pages. This document shows how to print files through Bluetooth and infrared connections. Some files cannot be printed.

HP printer settings

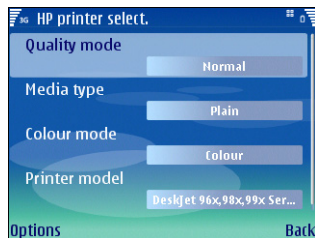
To optimize the printer settings of your HP printer, you can change the printer settings of your Nokia E62. For example, if you want to print high-quality photographs, you must set the quality mode and media type accordingly, and make sure that you use high-quality paper in your printer.



Note: These printer settings only apply when you use the HP Mobile Printing driver for printing.

To change the printer settings:

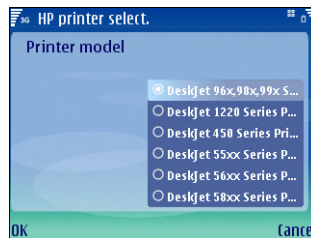
- 1 Select **Menu** → **Tools** → **HP printer**.



- 2 Change any of the following:
 - **Quality mode** – Specifies the quality of the print. For fast printing with limited color reproduction, select **Draft**. For balance between printing speed and color quality, select **Normal**. For additional color quality,

select **Best**. For printing images, use **Best**. To increase the quality of the printed images, also use high quality paper. Selecting **Best** increases the printing time significantly.

- **Media type** – Specifies the type of paper. To print images, use high-quality paper, and set the value to **Photo**.
- **Colour mode** – Specifies whether the print is in color or grayscale.
- **Printer model** – Specifies the Hewlett-Packard printer model. If your printer model is not listed, select a similar model.



- 3 To save your changes, press **Back**.

Printing through a Bluetooth connection

Your Nokia E62 comes with a built-in Bluetooth adapter. If your printer includes a compatible Bluetooth adapter, you can use a Bluetooth connection to print items from your Nokia E62.

To print an item through a Bluetooth connection:

- 1 If necessary, activate a Bluetooth connection on your printer. For details, refer to your printer documentation.
- 2 Activate a Bluetooth connection on your Nokia E62 by selecting **Menu**→ *Connect*→ *Bluetooth* and selecting *Bluetooth*→ *On*.
- 3 Make sure that your Nokia E62 is visible to all other devices with Bluetooth connectivity by selecting *My phone's visibility*→ *Shown to all*.
- 4 On your device, open the item that you want to print.
- 5 If you haven't already added a Bluetooth printer to your device, do it now by selecting *Options*→ *Printing options*→ *Printers*→ *Options*→ *Add* and defining the following settings:
 - *Printer* – Give a name to the printer.
 - *Driver* – There are two types of printer driver:
 - *HP Mobile Printing* – HP Mobile Printing driver for printing to Hewlett-Packard printers. The settings for this driver are explained in "HP printer settings" on page 4.
 - *General* – General printer driver with limited font support that may allow you to print text to other printers.
- 6 Select *Options*→ *Printing options*→ *Print*. You are asked to define the following print job settings:
 - *Printer* – Select your Bluetooth printer.
 - *Print* – Select whether to print all pages, or only odd or even pages.
 - *Print range* – Select from *All pages in range*, *Current page*, and *Defined pages*.
 - *Number of copies* – Enter the number of copies you want to print.
 - *Print to file* – Select whether to print to a file instead of paper.
- 7 Select *Options*→ *Print* to print the file.
 - *Bearer* – Select *Bluetooth*.
 - *Orientation* – Select whether to use portrait or landscape printing.
 - *Paper size* – Select the desired paper size.Press *Back* twice to save your printer settings and return to the item you want to print.

Printing through an infrared connection

If your printer includes an infrared port, you can print items from your Nokia E62 by using an infrared connection.

To print an item through an infrared connection:

- 1 If necessary, activate infrared on your printer. For details, refer to your printer documentation.
- 2 Activate infrared on your device by selecting **Menu**→ *Connect*→ *Infrared*.
- 3 Make sure that the infrared port of your device faces the infrared port of the printer.
- 4 On your device, open the item that you want to print.
- 5 If you haven't already added an infrared printer to your device, do it now by selecting *Options*→ *Printing options*→ *Printers*→ *Options*→ *Add* and defining the following settings:
 - *Printer* – Give a name to the printer.
 - *Driver* – There are two types of printer driver:
 - *HP Mobile Printing* – HP Mobile Printing driver for printing to Hewlett-Packard printers. The settings for this driver are explained in "HP printer settings" on page 4.
 - *General* – General printer driver with limited font support that may allow you to print text to other printers.
 - *Bearer* – Select *Infrared*.
 - *Orientation* – Select whether to use portrait or landscape printing.

- *Paper size* – Select the desired paper size. Press *Back* twice to save your printer settings and return to the item you want to print.
- 6 Select *Options*→ *Printing options*→ *Print*. You are asked to define the following print job settings:
 - *Printer* – Select your infrared printer.
 - *Print* – Select whether to print all pages, or only odd or even pages.
 - *Print range* – Select from *All pages in range*, *Current page*, and *Defined pages*.
 - *Number of copies* – Enter the number of copies you want to print.
 - *Print to file* – Select whether to print to a file instead of paper.
 - 7 Select *Options*→ *Print* to print the file.

Troubleshooting

General

If printing is interrupted or does not succeed:

- Check that you are still within the range of the device.
- Check that the number of simultaneous connections to the printer is not too high.

Printing with Bluetooth technology

If the search for devices with Bluetooth connectivity does not find the printer:

- Make sure that the printer supports Bluetooth wireless technology.
- Check that Bluetooth wireless technology is enabled on the printer.
- Check that the printer supports the Serial Port Profile (SSP).

If you cannot print through a Bluetooth connection:

- Check whether the printer requires pairing.
- Check whether the printer requires a password.