

Nokia 2310

User's Guide

DECLARATION OF CONFORMITY

Hereby, NOKIA CORPORATION declares that this RM-189 product is in compliance with the essential requirements and other relevant provisions of Directive 1999/5/EC.

A copy of the Declaration of Conformity can be found at
http://www.nokia.com/phones/declaration_of_conformity/.

C€0434

Copyright © 2006 Nokia. All rights reserved.

Reproduction, transfer, distribution or storage of part or all of the contents in this document in any form without the prior written permission of Nokia is prohibited.

US Patent No 5818437 and other pending patents. T9 text input software
Copyright © 1997-2006. Tegic Communications, Inc. All rights reserved.

Nokia and Nokia Connecting People are trademarks or registered trademarks of Nokia Corporation. Other product and company names mentioned herein may be trademarks or tradenames of their respective owners.

Nokia tune is a sound mark of Nokia Corporation.

Nokia operates a policy of continuous development. Nokia reserves the right to make changes and improvements to any of the products described in this document without prior notice.

Under no circumstances shall Nokia be responsible for any loss of data or income or any special, incidental, consequential or indirect damages howsoever caused.

The contents of this document are provided "as is". Except as required by applicable law, no warranties of any kind, either express or implied, including, but not limited to, the implied warranties of merchantability and fitness for a particular purpose, are made in relation to the accuracy, reliability or contents of this document. Nokia reserves the right to revise this document or withdraw it at any time without prior notice.

The availability of particular products may vary by region. Please check with the Nokia dealer nearest to you.

This device may contain commodities, technology or software subject to export laws and regulations from the US and other countries. Diversion contrary to laws is prohibited.

Contents

For your safety	5	Voice messages.....	19
General information	9	3. Write text	20
Access codes.....	9	4. Menu functions	21
Shared memory.....	9	Messages	21
Nokia support and contact information.....	10	Message settings.....	21
1. Get started	11	Create a message	22
Install the SIM card and battery.....	11	Inbox, sent items, and drafts	23
Charge the battery.....	13	Chat.....	24
Switch on and off.....	14	Picture messages.....	24
Keys and parts.....	15	Delete messages	25
Shortcuts in the standby mode.....	16	Contacts	25
Lock the keypad.....	17	Settings for contacts	26
2. Call functions.....	18	Call register	27
Make and answer a call	18	Settings	28
Loudspeaker	19	Tone settings	28
		Display settings	29
		Profiles	30

Time settings.....	30	5. Battery	
Call settings	30	information	40
Phone settings	31	Charging and	
Cost settings	32	discharging.....	40
Enhancement		6. Genuine	
settings.....	32	Enhancements	42
Right selection		Battery	43
key settings.....	33	7. Care and	
Alarm clock	33	maintenance	44
Radio	34	8. Additional safety	
Radio functions.....	35	information.....	46
Reminders.....	36	Index.....	55
Games	36		
Extras.....	37		
Calculator.....	37		
Converter.....	37		
Calendar	38		
Composer.....	38		
SIM services	39		

For your safety

Read these simple guidelines. Not following them may be dangerous or illegal. Read the complete user guide for further information.



SWITCH ON SAFELY

Do not switch the phone on when wireless phone use is prohibited or when it may cause interference or danger.



ROAD SAFETY COMES FIRST

Obey all local laws. Always keep your hands free to operate the vehicle while driving. Your first consideration while driving should be road safety.



INTERFERENCE

All wireless phones may be susceptible to interference, which could affect performance.



SWITCH OFF IN HOSPITALS

Follow any restrictions. Switch the phone off near medical equipment.



SWITCH OFF IN AIRCRAFT

Follow any restrictions. Wireless devices can cause interference in aircraft.



SWITCH OFF WHEN REFUELING

Do not use the phone at a refueling point. Do not use near fuel or chemicals.



SWITCH OFF NEAR BLASTING

Follow any restrictions. Do not use the phone where blasting is in progress.



USE SENSIBLY

Use only in the normal position as explained in the product documentation. Do not touch the antenna unnecessarily.



QUALIFIED SERVICE

Only qualified personnel may install or repair this product.



ENHANCEMENTS AND BATTERIES

Use only approved enhancements and batteries. Do not connect incompatible products.



WATER-RESISTANCE

Your phone is not water-resistant. Keep it dry.



BACK-UP COPIES

Remember to make back-up copies or keep a written record of all important information stored in your phone.



CONNECTING TO OTHER DEVICES

When connecting to any other device, read its user guide for detailed safety instructions. Do not connect incompatible products.



EMERGENCY CALLS

Ensure the phone is switched on and in service. Press the end key as many times as needed to clear the display and return to the start screen. Enter the emergency number, then press the call key. Give your location. Do not end the call until given permission to do so.

■ About your device

The wireless device described in this guide is approved for use on the EGSM 900 and GSM 1800 networks. Contact your service provider for more information about networks.

When using the features in this device, obey all laws and respect privacy and legitimate rights of others.



Warning: To use any features in this device, other than the alarm clock, the device must be switched on. Do not switch the device on when wireless device use may cause interference or danger.

■ Network services

To use the phone you must have service from a wireless service provider. Many of the features in this device depend on features in the wireless network to function. These network services may not be available on all networks or you may have to make specific arrangements with your service provider before you can utilize network services. Your service provider may need to give you additional instructions for their use and explain what charges will apply. Some networks may have limitations that affect how you can use network services. For instance, some networks may not support all language-dependent characters and services.

Your service provider may have requested that certain features be disabled or not activated in your device. If so, they will not appear on your device menu. Your device may also have been specially configured. This configuration may include changes in menu names, menu order, and icons. Contact your service provider for more information.

General information

■ Access codes

The security code supplied with the phone protects your phone against unauthorized use. The preset code is 12345.

The PIN code supplied with the SIM card helps to protect the card against unauthorized use. The PIN2 code supplied with some SIM cards is required to access certain services. If you enter the PIN or PIN2 code incorrectly three times in succession, you are asked for the PUK or PUK2 code. If you do not have them, contact your local service provider.

Select **Menu** > [Settings](#) > [Security settings](#) to set how your phone uses the access codes and security settings.

■ Shared memory

The following features in this device may share memory: [Messages](#) and [Composer](#). Use of one or more of these features may reduce the memory available for the remaining features sharing memory. For example, saving many text messages may use all of the available memory. Your device may display a message that the memory is full when you try to use a shared

memory feature. In this case, delete some of the information or entries stored in the shared memory features before continuing. Some of the features, such as [Contacts](#), may have a certain amount of memory specially allotted to them in addition to the memory shared with other features.

■ Nokia support and contact information

For the latest version of this guide, downloads, services and additional information related to your Nokia product, please visit www.nokia.com.hk/support. You may also download free configuration settings such as MMS, GPRS, e-mail, and other services for your phone model at www.nokia.com.hk/settings.

Should you still require assistance, please refer to www.nokia.com.hk/contactus.

To check for the nearest Nokia care center location for maintenance services, you may like to visit www.nokia.com.hk/carecenter.

1. Get started

■ Install the SIM card and battery

Always switch the device off and disconnect the charger before removing the battery.

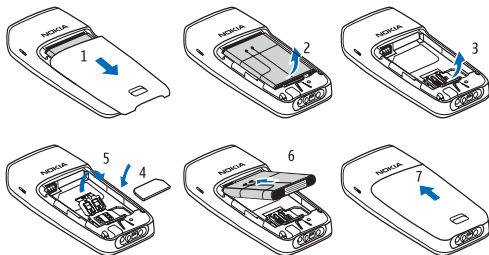
Keep all SIM cards out of the reach of small children.

For availability and information on using SIM card services, contact your SIM card vendor. This may be the service provider, network operator, or other vendor.

This phone is intended for use with the BL-5C battery.

1. Press the release button, and slide the back cover to remove it (1). Lift the battery, and remove it (2).
2. Carefully lift the SIM card holder from the finger grip of the phone (3). Insert the SIM card into the holder, so that the beveled corner is on the upper right side and the gold-colored contact area is facing downward (4). Close the SIM card holder, and press it to lock it into place (5).

3. Replace the battery and back cover (6, 7).



Note: Always switch off the power and disconnect the charger and any other device before removing the covers. Avoid touching electronic components while changing the covers. Always store and use the device with the covers attached.

■ Charge the battery



Warning: Use only batteries, chargers, and enhancements approved by Nokia for use with this particular model. The use of any other types may invalidate any approval or warranty, and may be dangerous.

Check the model number of any charger before use with this device. This device is intended for use when supplied with power from an AC-2X charger.

For availability of approved enhancements, please check with your dealer.

1. Connect the charger to a wall outlet.
2. Connect the charger to the phone. The battery indicator bar starts scrolling. When the battery is fully charged, the bar stops scrolling.



If the battery is completely discharged, it may take a few minutes before the charging indicator appears on the display or before any calls can be made.

■ Switch on and off

Press and hold the end key.

Use the phone only in its normal operating position.

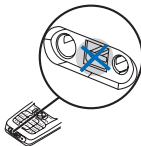
Your device has an internal antenna.



Note: As with any other radio transmitting device, do not touch the antenna unnecessarily when the device is switched on. Contact with the antenna affects call quality and may cause the device to operate at a higher power level than otherwise needed. Avoiding contact with the antenna area when operating the device optimizes the antenna performance and the battery life.



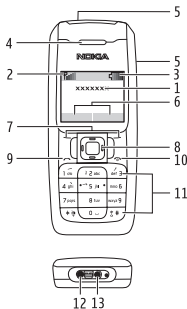
Note: Do not touch this connector as it is intended for use by authorized service personnel only.



■ Keys and parts

When the phone is ready for use, before you enter any characters, the phone is in the standby mode.

- Network name or operator logo (1)
- Network signal strength (2)
- Battery charge level (3)
- Earpiece (4)
- Loudspeaker (5)
- Selection key functions (6)
- Selection keys (7)
- Scroll key (8)
- Call key (9)
- End key and power key (10)
- Keypad (11)
- Charger connector (12)
- Headset connector (13)





Warning: The scroll key in this device may contain nickel. It is not intended to come into prolonged contact with the skin. Continuous exposure to nickel on the skin may lead to nickel allergy.

■ Shortcuts in the standby mode

Scroll up to access *Call register*.

Scroll down to access the names and numbers saved in *Contacts*.

Scroll left to write a message.

Scroll right to access the calendar.

Press and hold * 0 to activate the radio.

Press the right selection key (**Go to**) to view the functions in your shortcut list.

Press the call key once to access the list of dialed numbers. Scroll to the name or number that you want, and press the call key to call the number.

■ Lock the keypad

To lock the keypad to prevent accidental keypresses, in the standby mode, select **Menu**, and press * quickly; to unlock, select **Unlock**, and press * quickly.

To set the keypad to lock automatically after a preset time delay when the phone is in the standby mode and no function of the phone has been used, select **Menu** > *Settings* > *Phone settings* > *Keyguard settings* > *Automatic keyguard* > *On*. To set the phone to ask for the security code when you unlock the keypad, select *Keyguard code*.

When the keypad lock is on, calls may be possible to the official emergency number programmed into your device. Enter the emergency number, and press the call key. The emergency number you entered may not be displayed on the screen.

2. Call functions

■ Make and answer a call

To make a call, enter the phone number, including the country code and area code if necessary. Press the call key to call the number. Scroll right to increase or left to decrease the volume of the earpiece or headset during the phone call.

A conference call (network service) allows up to five people to participate in the same call. To make a call to a new participant, select **Options** > *New call*; select **Clear** to clear the screen if necessary. Enter the number you want, and press the call key. When the new call is answered, to add it to the conference call, select **Options** > *Conference*.

To answer an incoming call, press the call key. To reject the call without answering, press the end key.

■ Loudspeaker

If available, you may select **Loudsp.** or **Hands.** to use the loudspeaker or the earpiece of the phone during a call.





Warning: Do not hold the device near your ear when the loudspeaker is in use, because the volume may be extremely loud.

■ Voice messages

To call your voice mailbox, press and hold **1** in the standby mode (network service). You may need to enter the number when calling for the first time. Contact your service provider to receive your voice mailbox number.

3. Write text

You can enter text using traditional text input  or predictive text input . To use traditional text input, press the key repeatedly until the letter appears. To turn on predictive text input when writing, select **Options** > *Dictionary* and the desired language; to turn it off, select **Options** > *Dictionary off*.

When using predictive text input, press each key once for a single letter. If the displayed word is the one you want, press **0**, and start writing the next word. To change the word, press ***** repeatedly until the word you want appears. If **?** is displayed after the word, the word is not in the dictionary. To add the word to the dictionary, select **Spell**, enter the word (using traditional text input), and select **OK**.

Tips for writing text: to add a space, press **0**. To quickly change the text input method, press **#** repeatedly, and check the indicator at the top of the display. To add a number, press and hold the desired number key. To get a list of special characters when using traditional text input, press *****; when using predictive text input, press and hold *****. To undo the clearing of the message in editing window, select **Options** > *Undo clear*.

4. Menu functions

The phone functions are grouped into menus. Not all menu functions or option items are described here.

In the standby mode, select **Menu** and the desired menu and submenu. Select **Exit** or **Back** to exit the current menu. Press the end key to return to the standby mode directly.

■ Messages

The message services can only be used if they are supported by your network or service provider.



Message settings

To edit your message settings, select **Menu** > *Messages* > *Message settings* and from the following:

Sending profile — select *Message centre number* to save the phone number needed for sending text and picture messages. You obtain this number from your service provider. Select *Messages sent as* (network service) to choose the message type (*Text*, *Fax*, *Paging*, or *E-mail*). Select *Message validity* (network

service) to choose how long the network attempts to deliver your message.

Character support (network service) — to set whether *Full* or *Reduced* coding is used when sending a text message

No. screening — to view or edit the list of filtered numbers. Messages from the filtered numbers are saved directly to the *Screened messages* folder.

Create a message

Your device supports the sending of text messages beyond the character limit for a single message. Longer messages are sent as a series of two or more messages. Your service provider may charge accordingly. Characters that use accents or other marks, and characters from some language options like Chinese, take up more space limiting the number of characters that can be sent in a single message.


The number of available characters and the current part number of a multipart message are shown on the top right of the display (for example, 918/1).

1. Select **Menu** > *Messages* > *Create message*.
2. Write the message.
3. To send the message, select **Options** > *Send*, enter the recipient's phone number, and select **OK**.



Note: When sending messages, your device may display *Message Sent*. This is an indication that the message has been sent by your device to the message center number programmed into your device. This is not an indication that the message has been received at the intended destination. For more details about messaging services, check with your service provider.

Inbox, sent items, and drafts

When you receive text messages, the number of new messages and  are shown in the standby mode. Select **Show** to view the messages immediately, or **Exit** to view them later in **Menu** > *Messages* > *Inbox*.

In *Drafts*, you can view the messages that you saved with *Save message*. In *Sent items*, you can view the copies of the messages that you sent.

Chat

You can have a conversation with other people using *Chat* (network service). Each chat message is sent as a separate text message. The messages received and sent during a chat session are not saved.

To start a chat session, select **Menu** > *Messages* > *Chat*; or, when reading a received text message, select **Options** > *Chat*.

Picture messages

You can receive and send messages that contain pictures (network service). Received picture messages are saved in *Inbox*. Each picture message comprises several text messages. Therefore, sending one picture message may cost more than one text message.



Note: The picture message function can be used only if it is supported by your network operator or service provider. Only compatible devices that offer picture message features can receive and display picture messages. The appearance of a message may vary depending on the receiving device.

Delete messages

To delete all read messages or all the messages in a folder, select **Menu** > *Messages* > *Delete messages* > *All read* or the desired folder.

■ Contacts

You can save names and phone numbers in the phone memory and in the SIM card memory. The internal phone book can store up to 200 names.



To search for a contact, scroll down in the standby mode, and enter the first letters of the name. Scroll to the name that you want.

You can also select **Menu** > *Contacts* and from the following options:

Add contact — to save names and phone numbers in the phone book

Copy — to copy names and phone numbers all at once or one by one from the internal phone book to the SIM phone book, or vice versa

Delete — to delete names and phone numbers from the phone book individually or all at once



Speed dialling — to activate the speed dial function and to edit the numbers assigned to the speed dial keys

My numbers — to view the phone numbers assigned to your SIM card, if the numbers are included on your SIM card

Settings for contacts

Select **Menu** > *Contacts* > *Settings* and from the available options:

Memory in use — to select whether the names and phone numbers are saved in *Phone* or *SIM card*. When you change the SIM card, *SIM card* memory is automatically selected.

Contacts view — to select how the names and phone numbers are displayed. When you view the **Details** of a contact, the name or phone number saved in the SIM card memory is indicated by  and the name or phone number saved in the phone memory is indicated by .

Memory status — to check how many names and phone numbers are already saved and how many can still be saved in each phone book

■ Call register



The phone registers the number of missed, received, and dialed calls, the approximate length of your calls, and the number of sent and received messages. The network must support these functions, and the phone must be switched on and inside the network service area.

Select **Menu** > *Call register* > *Missed calls*, *Received calls*, or *Dialled numbers* > **Options** to view the time of the call; edit, view, or call the registered phone number; add it to the phone book or to the list of screened numbers; or delete it from the recent call list. You can also send a text message. To reset the recent call lists, select **Menu** > *Call register* > *Delete recent call lists* and the lists you want.

Select **Menu** > *Call register* > *Call duration* to view the approximate duration of the last call, all received calls, all dialed calls, or all calls.

To reset the timers, select *Clear timers*, enter the security code, and select **OK**.



Note: The actual invoice for calls and services from your service provider may vary, depending upon network features, rounding off for billing, taxes, and so forth.

■ Settings

In this menu, you can adjust various phone settings. To reset some menu settings to their default values, select *Restore factory settings*.



Tone settings

Select **Menu** > *Settings* > *Tone settings* and from the available options:

Ring tone — to set the tone for incoming calls

Ring volume — to set the volume level for the ringing and message alert tones. If you set *Ring volume* to level 2 or above, your phone rings with the volume ascending from level 1 to the level for incoming calls.

Vibrating alert — to set the phone to vibrate when you receive a call or a text message

Message alert tone — to set the tone to sound when you receive a text message

Warning tones — to set the phone to sound tones, for example, when the battery is running out of power

Display settings

Select **Menu** > *Settings* > *Display settings* and from the following:

Themes — scroll to the desired theme, and select **Options** > *Activate* or *Edit* to activate or edit the theme.

Colour schemes — to adjust the color scheme of the theme in use

Power saver clock — to set the phone to show the digital or classic clock and all the main display icons as a screen saver

Backlight time — to set whether the backlights are switched on for 15 seconds (*Normal*), for 30 seconds (*Extended*), or not at all (*Off*). Even if *Off* is selected, the backlight stays on for 15 seconds when the phone is switched on.

Screen saver — to turn the screen saver on or off, to set the time for turning on the screen saver (*Time-out*), or to select the picture for your screen saver (*Screen saver*)

Profiles

You can customize the profiles for certain features, such as ringing tones and the screen saver.

Select **Menu** > *Settings* > *Profiles*, the profile that you want to modify, and *Personalise*.

Time settings


Select **Menu** > *Settings* > *Time settings* > *Clock* to hide or show the clock, to set the time, or to edit the time format. To set the date, select *Date setting*.

If the battery was removed from the phone, you may need to set the time and date again.

Call settings

Select **Menu** > *Settings* > *Call settings* and from the following options:

Call divert (network service) – to divert your incoming calls to your voice mailbox or to another phone number. Scroll to the divert option you want, and select *Activate* to set the divert option on and *Cancel* to set it off. To check whether the selected option is active, select *Check status*. To specify a delay for

certain diverts, select *Set delay time* (not available for all divert options). Several divert options may be active at the same time. When *Divert all voice calls* is activated,  is shown on the display in the standby mode. To deactivate all call diverts, select *Cancel all diverts*.

Send my caller identity (network service) — to determine if your phone number is displayed to or hidden from the person you are calling

Automatic redial — to set your phone to make up to 10 attempts to connect the call after an unsuccessful call attempt

Call waiting service (network service) — to let the network notify you of a new incoming call while you have a call in progress

Line for outgoing calls (network service) — to use either phone line 1 or 2 for making calls, or prevent line selection, if supported by your SIM card.

Phone settings

Select **Menu** > *Settings* > *Phone settings* > *Language* to select the language for the display texts, *Network selection* to set the phone to automatically select a cellular network available in your area or to select the network manually, *Start-up tone* to select whether the phone plays a tone when it is switched on, or

Welcome note to enter a message that is shown briefly on the display when the phone is switched on.

Cost settings



Note: The actual invoice for calls and services from your service provider may vary, depending on network features, rounding off for billing, taxes, and so forth.

Select **Menu** > *Settings* > *Cost settings* > *Prepaid tracker* (network service) to view information on prepaid credit, *In-call timer* to turn the call time display on or off, *Call summary* to turn the approximate call time report on or off.



Note: When no more charging units or currency units are left, calls may only be possible to the official emergency number programmed into the device.

Enhancement settings

The enhancement setting items are visible only after one of the enhancements is connected to the phone.

Select **Menu** > *Settings* > *Enhancement settings* > *Headset* or *Loopset*.

To set the phone to automatically answer an incoming call, select *Automatic answer*. If the ringing tone is set to *Beep once* or the active phone profile is *Silent*, automatic answer is off.

Right selection key settings

In the standby mode, you may select **Go to** to access a list of shortcuts. To define or organize the shortcuts, select **Menu** > *Settings* > *Right selection key settings*. To select functions for shortcuts, select *Select options*, to change the order of the shortcuts in the list, select *Organise*.

■ Alarm clock

To set the time for the alarm, select **Menu** > *Alarm clock* > *Alarm time*. To select the tone for the alarm, select *Alarm tone*. To set the alarm to sound only once or repeatedly on selected days of the week, select *Repeat alarm*. When the alarm sounds, select **Stop** to stop the alarm or **Snooze** to stop the alarm and set it to ring again in 10 minutes.



If the alarm time is reached while the device is switched off, the device switches itself on and starts sounding the alarm tone. If you select **Stop**, the device asks whether you want to activate the device for calls. Select **No** to switch off the device or **Yes** to make and receive calls. Do not select **Yes** when wireless phone use may cause interference or danger.

■ Radio

You can listen to the radio with a headset or the loudspeaker. Keep the headset connected to the phone. The lead of the headset functions as the radio antenna.



Warning: Listen to music at a moderate level.

Continuous exposure to high volume may damage your hearing. Do not hold the device near your ear when the loudspeaker is in use, because the volume may be extremely loud.

Select **Menu** > **Radio** to turn on the radio. The channel location number, the name of the radio channel (if you have saved the channel), and the frequency of the radio channel are displayed. If you have already saved radio channels, scroll up or down to

the channel you want to listen to, or press the the corresponding number keys to select a radio channel location.

Radio functions

When the radio is on, press and hold the scroll keys up or down to start the channel search. Searching stops when a channel is found. To save the channel, select **OK** to set the frequency, enter the name of the channel, and select the location where you want to save.

When the radio is on, to adjust the volume of the radio, scroll left and right.

Select **Options** and one of the following:

Switch off — to turn off the radio

Visualisation > *Show Visualisation* > *on* — to have your phone display changes of radio sound visually. To change the way the changes are displayed, select *Visualisation type*.

Save channel — to save the radio channel you found

Auto-tuning or *Manual tuning* — to automatically or manually search for the channel

Delete channel or *Rename* — to delete or rename a channel

Set frequency — to enter the frequency of the desired radio channel

Loudspeaker or *Headset* — to listen to the radio using the loudspeaker or headset

Clock radio — to set the time to turn on the radio as the alarm tone

You can normally make a call or answer an incoming call while listening to the radio. During the call, the volume of the radio is muted.

■ Reminders

To save a short text note with an alarm, select **Menu** > *Reminders* > *Add new*. When the reminder time is reached, select **Quit** to stop the alarm or **Postp.** to let the phone alarm again in 10 minutes.



■ Games

Each game has a brief help text.

To adjust common game settings, select **Menu** > *Games* > *Settings*. You can set the sounds (*Game sounds*) and vibrations (*Shakes*) for the game.



■ Extras



Calculator



Note: This calculator has limited accuracy and is designed for simple calculations.

Select **Menu** > *Extras* > *Calculator*.

1. Press **0** to **9** to insert digits and **#** to insert a decimal point.
To change the sign of the entered number, press *****.
2. Scroll up or down to select **+**, **-**, **x**, or **/** on the right side of the display.
3. Repeat steps 1 and 2 if necessary.
4. To get the result, select **Equals**.

Converter

To convert different measurement units, select **Menu** > *Extras* > *Converter*. To access your last five conversions, select *Last 5 conv.* You can also select to use six predefined unit categories: *Temperature*, *Weight*, *Length*, *Area*, *Volume*, and *Currency*.

To add your own conversions, select *My conversions*.

When performing a conversion, scroll up or down to swap the positions of the units in the conversion.

Calendar

Select **Menu** > *Extras* > *Calendar* to open the calendar in a 2-week view.

Composer

Select **Menu** > *Extras* > *Composer* and a tone.

To create your own ringing tones, enter the notes. For example, press **4** for note **f**. Press **8** to shorten (-) and **9** to lengthen (+) the duration of the note or rest. Press **0** to insert a rest, ***** to set the octave, and **#** to make the note sharp (not available for notes **e** and **b**).

c	d	e
f	0 g	a
b	-	+
123	—	#

When the tone is complete, select **Options** > *Play*, *Save*, *Tempo*, *Send*, *Clear screen*, or *Exit*.

Leaving applications running in the background increases the demand on battery power and reduces the battery life.

■ SIM services

Your SIM card may provide additional services that you can access. This menu is shown only if it is supported by your SIM card. The name and contents of the menu depend on the SIM card.

For information, contact your service provider.



5. Battery information

■ Charging and discharging

Your device is powered by a rechargeable battery. The full performance of a new battery is achieved only after two or three complete charge and discharge cycles. The battery can be charged and discharged hundreds of times, but it will eventually wear out. When the talk and standby times are noticeably shorter than normal, replace the battery. Use only Nokia approved batteries, and recharge your battery only with Nokia approved chargers designated for this device.

If a replacement battery is being used for the first time or if the battery has not been used for a prolonged period, it may be necessary to connect the charger and then disconnect and reconnect it to start the charging.

Unplug the charger from the electrical plug and the device when not in use. Do not leave a fully charged battery connected to a charger, since overcharging may shorten its lifetime. If left unused, a fully charged battery will lose its charge over time.

Battery information

If the battery is completely discharged, it may take a few minutes before the charging indicator appears on the display or before any calls can be made.

Use the battery only for its intended purpose. Never use any charger or battery that is damaged.

Do not short-circuit the battery. Accidental short-circuiting can occur when a metallic object such as a coin, clip, or pen causes direct connection of the positive (+) and negative (-) terminals of the battery. (These look like metal strips on the battery.) This might happen, for example, when you carry a spare battery in your pocket or purse. Short-circuiting the terminals may damage the battery or the connecting object.

Leaving the battery in hot or cold places, such as in a closed car in summer or winter conditions, will reduce the capacity and lifetime of the battery. Always try to keep the battery between 15°C and 25°C (59°F and 77°F). A device with a hot or cold battery may not work temporarily, even when the battery is fully charged. Battery performance is particularly limited in temperatures well below freezing.

Do not dispose of batteries in a fire as they may explode. Batteries may also explode if damaged. Dispose of batteries according to local regulations. Please recycle when possible. Do not dispose as household waste.

6. Genuine Enhancements

A new extensive range of enhancements is available for your phone. Select the enhancements which accommodate your specific communication needs.



For the compatible enhancements related to this mobile phone, please visit www.nokia.com.

For availability of the enhancements, please check with your local dealer.

A few practical rules about accessories and enhancements.

- Keep all accessories and enhancements out of the reach of small children.
- When you disconnect the power cord of any accessory or enhancement, grasp and pull the plug, not the cord.
- Check regularly that enhancements installed in a vehicle are mounted and are operating properly.
- Installation of any complex car enhancements must be made by qualified personnel only.

Use only batteries, chargers and enhancements approved by the phone manufacturer. The use of any other types may invalidate any approval or warranty applying to the phone, and may be dangerous.

■ Battery

Type	Tech	Talktime*	Standby*
BL-5C	Li-ion	Up to 5 hours	Up to 320 hours

*Variation in operation times may occur depending on SIM card, network and usage settings, usage style and environments. Use of FM radio and integrated hands-free will affect talktime and standby.

7. Care and maintenance

Your device is a product of superior design and craftsmanship and should be treated with care. The suggestions below will help you protect your warranty coverage.

- Keep the device dry. Precipitation, humidity, and all types of liquids or moisture can contain minerals that will corrode electronic circuits. If your device does get wet, remove the battery, and allow the device to dry completely before replacing it.
- Do not use or store the device in dusty, dirty areas. Its moving parts and electronic components can be damaged.
- Do not store the device in hot areas. High temperatures can shorten the life of electronic devices, damage batteries, and warp or melt certain plastics.
- Do not store the device in cold areas. When the device returns to its normal temperature, moisture can form inside the device and damage electronic circuit boards.
- Do not attempt to open the device other than as instructed in this guide.
- Do not drop, knock, or shake the device. Rough handling can break internal circuit boards and fine mechanics.

Care and maintenance

- Do not use harsh chemicals, cleaning solvents, or strong detergents to clean the device.
- Do not paint the device. Paint can clog the moving parts and prevent proper operation.
- Use only the supplied or an approved replacement antenna. Unauthorized antennas, modifications, or attachments could damage the device and may violate regulations governing radio devices.
- Use chargers indoors.
- Always create a backup of data you want to keep (such as contacts and calendar notes) before sending your device to a service facility.

All of the above suggestions apply equally to your device, battery, charger, or any enhancement. If any device is not working properly, take it to the nearest authorized service facility for service.

8. Additional safety information

Your device and its enhancements may contain small parts. Keep them out of the reach of small children.

■ Operating environment

Remember to follow any special regulations in force in any area, and always switch off your device when its use is prohibited or when it may cause interference or danger. Use the device only in its normal operating positions. This device meets RF exposure guidelines when used either in the normal use position against the ear or when positioned at least 2.2 centimeters (7/8 inches) from the body. When a carry case, belt clip, or holder is used for body-worn operation, it should not contain metal and should position the device the above-stated distance from your body.

In order to transmit data files or messages, this device requires a good quality connection to the network. In some cases, transmission of data files or messages may be delayed until such a connection is available. Ensure the above separation distance instructions are followed until the transmission is completed.

Parts of the device are magnetic. Metallic materials may be attracted to the device. Do not place credit cards or other magnetic storage media near the device, because information stored on them may be erased.

■ Medical devices

Operation of any radio transmitting equipment, including wireless phones, may interfere with the functionality of inadequately protected medical devices. Consult a physician or the manufacturer of the medical device to determine if they are adequately shielded from external RF energy or if you have any questions. Switch off your device in health care facilities when any regulations posted in these areas instruct you to do so. Hospitals or health care facilities may be using equipment that could be sensitive to external RF energy.

Pacemakers

Pacemaker manufacturers recommend that a minimum separation of 15.3 centimeters (6 inches) be maintained between a wireless phone and a pacemaker to avoid potential interference with the pacemaker. These recommendations are consistent with the independent research by and recommendations of Wireless Technology Research. Persons with pacemakers should:

- Always keep the device more than 15.3 centimeters (6 inches) from the pacemaker
- Not carry the device in a breast pocket
- Hold the device to the ear opposite the pacemaker to minimize the potential for interference.

If you suspect interference, switch off your device and move the device away.

Hearing aids

Some digital wireless devices may interfere with some hearing aids. If interference occurs, consult your service provider.

■ Vehicles

RF signals may affect improperly installed or inadequately shielded electronic systems in motor vehicles such as electronic fuel injection systems, electronic antiskid (antilock) braking systems, electronic speed control systems, and air bag systems. For more information, check with the manufacturer or its representative of your vehicle or any equipment that has been added.

A d d i t i o n a l s a f e t y i n f o r m a t i o n

Only qualified personnel should service the device, or install the device in a vehicle. Faulty installation or service may be dangerous and may invalidate any warranty that may apply to the device. Check regularly that all wireless device equipment in your vehicle is mounted and operating properly. Do not store or carry flammable liquids, gases, or explosive materials in the same compartment as the device, its parts, or enhancements. For vehicles equipped with an air bag, remember that air bags inflate with great force. Do not place objects, including installed or portable wireless equipment in the area over the air bag or in the air bag deployment area. If in-vehicle wireless equipment is improperly installed and the air bag inflates, serious injury could result.

Using your device while flying in aircraft is prohibited. Switch off your device before boarding an aircraft. The use of wireless teledevices in an aircraft may be dangerous to the operation of the aircraft, disrupt the wireless telephone network, and may be illegal.

■ Potentially explosive environments

Switch off your device when in any area with a potentially explosive atmosphere, and obey all signs and instructions. Potentially explosive atmospheres include areas where you would normally be advised to turn off your vehicle engine. Sparks in such areas could cause an explosion or fire resulting in bodily injury or even death. Switch off the device at refueling points such as near gas pumps at service stations. Observe restrictions on the use of radio equipment in fuel depots, storage, and distribution areas; chemical plants; or where blasting operations are in progress. Areas with a potentially explosive atmosphere are often but not always clearly marked. They include below deck on boats, chemical transfer or storage facilities, vehicles using liquefied petroleum gas (such as propane or butane), and areas where the air contains chemicals or particles such as grain, dust, or metal powders.

■ Emergency calls



Important: Wireless phones, including this device, operate using radio signals, wireless networks, landline networks, and user-programmed functions. Because of this, connections in all conditions cannot be guaranteed. You should never rely solely on any wireless device for essential communications like medical emergencies.

To make an emergency call:

1. If the device is not on, switch it on. Check for adequate signal strength.

Some networks may require that a valid SIM card is properly inserted in the device.

2. Press the end key as many times as needed to clear the display and ready the device for calls.
3. Enter the official emergency number for your present location. Emergency numbers vary by location.
4. Press the call key.

If certain features are in use, you may first need to turn those features off before you can make an emergency call. Consult this guide or your service provider for more information.

When making an emergency call, give all the necessary information as accurately as possible. Your wireless device may be the only means of communication at the scene of an accident. Do not end the call until given permission to do so.

■ Certification information (SAR)

THIS DEVICE MEETS INTERNATIONAL GUIDELINES FOR EXPOSURE TO RADIO WAVES

Your mobile device is a radio transmitter and receiver. It is designed and manufactured not to exceed the limits for exposure to radio frequency (RF) recommended by international guidelines (ICNIRP). These limits are part of comprehensive guidelines and establish permitted levels of RF energy for the general population. The guidelines were developed by independent scientific organizations through periodic and thorough evaluation of scientific studies. The guidelines include a substantial safety margin designed to assure the safety of all persons, regardless of age and health.

The exposure standard for mobile devices employs a unit of measurement known as the Specific Absorption Rate, or SAR. The SAR limit stated in the international guidelines is 2.0 watts/kilogram (W/kg)*. Tests for SAR are conducted using standard operating positions with the device transmitting at its highest certified power level in all tested frequency bands. Although the SAR is determined at the highest certified power level, the actual SAR of the device while operating can be well below the maximum value. This is because the device is designed to operate at multiple power levels so as to use only the power

required to reach the network. In general, the closer you are to a base station, the lower the power output of the device.

The highest SAR value for this device when tested for use at the ear is 0.64 W/kg.

SAR values may vary depending on national reporting and testing requirements and the network band. Use of device accessories and enhancements may result in different SAR values. Additional SAR information may be provided under product information at www.nokia.com.

* The SAR limit for mobile devices used by the public is 2.0 W/kg averaged over 10 grams of body tissue. The guidelines incorporate a substantial margin of safety to give additional protection for the public and to account for any variations in measurements. SAR values may vary depending on national reporting requirements and the network band. For SAR information in other regions, please look under product information at www.nokia.com.

Index

A

- About your device 7
- Access codes 9
- Additional safety information 46
- Alarm clock 33

B

- Battery 43
- Battery information 40
 - type 43

C

- Calculator 37
- Calendar 38
- Call functions 18
- Call register 27
- Call settings 30
- Care and maintenance 44
- Certification information (SAR) 53

- Charge the battery 13
- Charging and discharging 40
- Chat 24
- Composer 38
- Contacts 25
- Converter 37
- Cost settings 32
- Create a message 22

D

- Delete messages 25
- Display settings 29

E

- Emergency calls 51
- Enhancement settings 32
- Extras 37

F

- For your safety 5

G

Games 36
General information 9
Genuine Enhancements 42
Get started 11

I

Inbox, sent items, and drafts 23
Install the SIM card and battery 11

K

Keys and parts 15

L

Lock the keypad 17
Loudspeaker 19

M

Make and answer a call 18
Medical devices 47
Menu functions 21

Message settings 21
Messages 21

N

Network services 8
Nokia support and contact information 10

O

Operating environment 46

P

Phone settings 31
Picture messages 24
Potentially explosive environments 50
Profiles 30

R

Radio 34
Radio functions 35
Reminders 36
Right selection key settings 33

S

Settings 28

Settings for contacts 26

Shared memory 9

Shortcuts in the standby
mode 16

SIM services 39

Switch on and off 14

T

Time settings 30

Tone settings 28

V

Vehicles 48

Voice messages 19

W

Write text 20