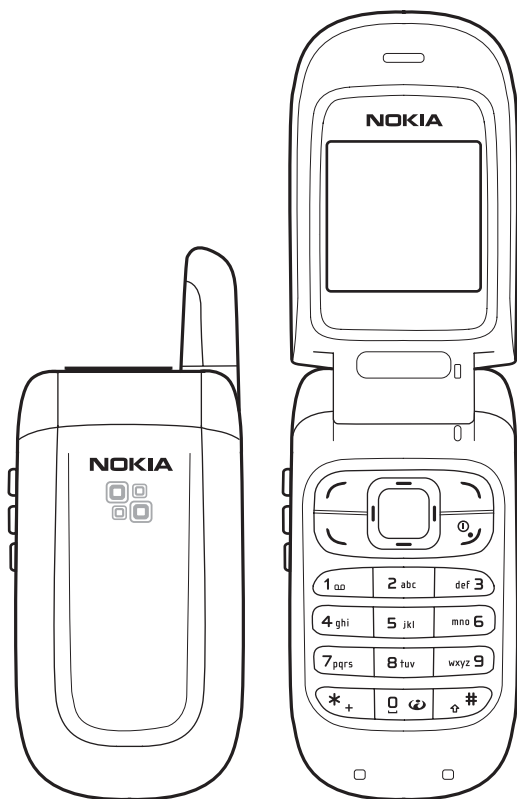


Nokia 2255 User's Guide



LEGAL INFORMATION

Copyright © 2005 Nokia. All rights reserved.

Nokia, Nokia Connecting People, Nokia 2255, and the Nokia Original Enhancements logos are trademarks or registered trademarks of Nokia Corporation. Other company and product names mentioned herein may be trademarks or trade names of their respective owners.

T9 text input software Copyright ©1999–2005. Tegic Communications, Inc. All rights reserved.



Includes RSA BSAFE cryptographic or security protocol software from RSA Security.

The information contained in this user guide was written for the Nokia 2255 product. Nokia operates a policy of ongoing development. Nokia reserves the right to make changes to any of the products described in this document without prior notice.

UNDER NO CIRCUMSTANCES SHALL NOKIA BE RESPONSIBLE FOR ANY LOSS OF DATA OR INCOME OR ANY SPECIAL, INCIDENTAL, AND CONSEQUENTIAL OR INDIRECT DAMAGES HOWSOEVER CAUSED. THE CONTENTS OF THIS DOCUMENT ARE PROVIDED "AS IS." EXCEPT AS REQUIRED BY APPLICABLE LAW, NO WARRANTIES OF ANY KIND, EITHER EXPRESS OR IMPLIED, INCLUDING, BUT NOT LIMITED TO, THE IMPLIED WARRANTIES OF MERCHANTABILITY AND FITNESS FOR A PARTICULAR PURPOSE, ARE MADE IN RELATION TO THE ACCURACY AND RELIABILITY OR CONTENTS OF THIS DOCUMENT. NOKIA RESERVES THE RIGHT TO REVISE THIS DOCUMENT OR WITHDRAW IT AT ANY TIME WITHOUT PRIOR NOTICE.

EXPORT CONTROLS This device may contain commodities, technology, or software subject to export laws and regulations from the U.S. and other countries. Diversion contrary to law is prohibited.

Contents

For your safety	v	Voice mail	8
About your device	vi	Number screening	8
Network services	vii	Lock the keypad (keyguard)	9
Welcome	viii	3. Text entry	10
Get help	viii	Traditional text input	10
Find your device label	viii	Tips for writing text	10
Nokia support and contact information	viii	Predictive text input	10
		Activate or deactivate	10
		Text entry	11
1. Phone at a glance	1	4. Messages	12
Open the fold	1	Write messages	12
Phone keys, indicators, and connectors	1	Read messages (Inbox)	12
Standby mode	1	Send items and drafts	13
Quick keys	2	Distribution lists	13
Indicators and icons	2	Screened messages	13
Device menus	2	Delete messages	14
Scroll method	3	Message counter	14
Shortcuts	3	Message settings	14
		Voice mailbox	14
2. Set up your device	4	5. Call register	16
The antenna	4	Check missed, received, or dialed calls	16
Insert the UIM (SIM) card and battery	4	Delete recent call list	16
Insert the UIM card	4	Call duration	17
Insert the battery	5	Message counter	17
Charge the battery	6	6. Contacts	18
Switch on or off	6	Search for a name and phone number	18
Make a call	7	Contacts list options	18
Use the keypad	7	Contacts settings	19
Use the contacts list	7		
Redialling a number	7		
Speed dialling	7		
Answer calls	7		
Answer a call	7		
Adjust the volume during a call	8		
Loudspeaker	8		
Options during a call	8		

7. Settings	20	11. Battery information	35
Tone settings	20	Charging and discharging batteries	35
Display settings	20	Nokia battery authentication	
Profiles	21	guidelines	36
Activate	21	Charging times	38
Personalise a profile	21	Talk and standby times.....	38
Set a timed profile	21		
Time settings	22	12. Care and maintenance	39
Call settings.....	22		
Calling cards	23	13. Additional safety information	40
Phone settings	24	Operating environment.....	40
Security settings.....	25	Medical devices.....	40
Network settings.....	26	Vehicles.....	41
Network feature setting	26	Potentially explosive environments.	41
Own number selection	27	Emergency calls.....	42
My menu settings.....	27	Certification information (SAR).....	42
Restore factory settings.....	28		
8. Tools and games	29	Index	44
Alarm clock.....	29		
Radio.....	29		
Reminders	30		
Games.....	30		
9. Extras.....	31		
Calculator.....	31		
Make a calculation.....	31		
Converter.....	31		
Currency converter.....	32		
Spreadsheet	32		
Calendar.....	32		
Countdown timer.....	33		
Stopwatch.....	33		
UIM services.....	33		
10. Enhancements.....	34		

For your safety

Read these simple guidelines. Not following them may be dangerous or illegal. Read the complete user guide for further information.



SWITCH ON SAFELY

Do not switch the device on when wireless phone use is prohibited or when it may cause interference or danger.



ROAD SAFETY COMES FIRST

Obey all local laws. Always keep your hands free to operate the vehicle while driving. Your first consideration while driving should be road safety.



INTERFERENCE

All wireless devices may be susceptible to interference, which could affect performance.



SWITCH OFF IN HOSPITALS

Follow any restrictions. Switch the phone off near medical equipment.



SWITCH OFF IN AIRCRAFT

Follow any restrictions. Wireless devices can cause interference in aircraft.



SWITCH OFF WHEN REFUELLING

Do not use the phone at a refuelling point. Do not use near fuel or chemicals.



SWITCH OFF NEAR BLASTING

Follow any restrictions. Do not use the phone where blasting is in progress.



USE SENSIBLY

Use only in the normal position as explained in the product documentation. Do not touch the antenna unnecessarily.



QUALIFIED SERVICE

Only qualified personnel may install or repair this product.



ENHANCEMENTS AND BATTERIES

Use only approved enhancements and batteries. Do not connect incompatible products.



WATER-RESISTANCE

Your device is not water-resistant. Keep it dry.



BACKUP COPIES

Remember to make backup copies or keep a written record of all important information stored in your phone.



CONNECTING TO OTHER DEVICES

When connecting to any other device, read its user guide for detailed safety instructions. Do not connect incompatible products.



EMERGENCY CALLS

Ensure the phone is switched on and in service. Press the end key as many times as needed to clear the display and return to standby mode. Enter the emergency number, then press the call key. Give your location. Do not end the call until given permission to do so.

About your device

The wireless device described in this guide is approved for use on the CDMA 800 network. Contact your service provider for more information about networks.

When using the features in this phone, obey all laws and respect privacy and legitimate rights of others.



Warning: To use any features in this phone, other than the alarm clock, the phone must be switched on. Do not switch the phone on when wireless phone use may cause interference or danger.

■ Network services

To use the phone you must have service from a wireless service provider or network operator. Many of the features in this device depend on features in the wireless network to function. These network services may not be available on all networks or you may have to make specific arrangements with your service provider before you can utilise network services. Your service provider may need to give you additional instructions for their use and explain what charges will apply.

Some networks may have limitations that affect how you can use network services. For instance, some networks may not support all language-dependent characters and services.

See "[Network feature setting](#)", p. 26.

Your service provider may have requested that certain features be disabled or not activated in your device. If so, they will not appear in your device menu. Your device may also have been specially configured. This configuration may include changes in menu names, menu order, and icons. Contact your service provider for more information.

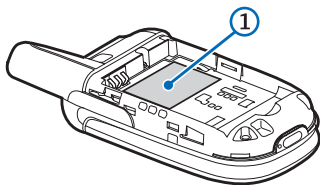
Welcome

Congratulations on your purchase of the Nokia 2255 mobile phone. Your phone provides many functions that are practical for daily use, such as a hands-free speakerphone, alarm clock, calculator, calendar, and more. To personalise your phone, you can set your favourite ring tones.

■ Get help

Find your device label

We recommend that you have the following information available before contacting the Nokia Customer Care Centre or the network operator. The information is on the type label (1) on the back of the phone under the battery:



- Model number Nokia 2255
- International mobile equipment identity (IMEI), or electronic serial number (ESN)

Do not remove or deface the label.

Nokia support and contact information

For the latest version of this guide, downloads, services and additional information related to your Nokia product, please visit www.nokia-asia.com/support or your local Nokia web site.

Should you still require assistance, please refer to www.nokia-asia.com/contactus.

To check for the nearest Nokia care center location for maintenance services, you may like to visit www.nokia-asia.com/repair.

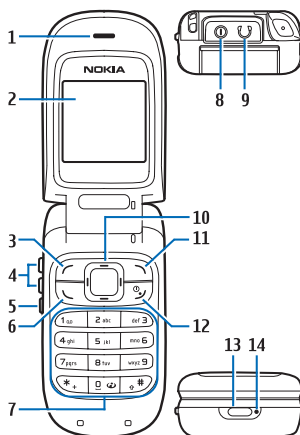
1. Phone at a glance

■ Open the fold

To use the phone, you must open the fold. Do not try to open the fold more than the hinge allows.

To close the fold, push from the top part of the device, not from the hinge.

■ Phone keys, indicators, and connectors

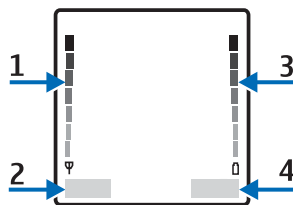


- Earpiece and loudspeaker (1)
- Display screen (2)
- Left selection key (3)
- Volume keys (4)
- Flashlight key (5)

- Call key (6)
- Keypad (7)
- Charger connector (8)—under the rubber cover
- Headset connection (9)—under the rubber cover
- 4-way scroll key (10)
- Right selection key (11)
- End and power key (12)
- Flashlight lens (13)
- Microphone (14)

■ Standby mode

The standby mode is home base and indicates your phone is in standby mode.



Signal strength (1)—A higher bar indicates a stronger network signal.

Menu (2)—Press the left selection key to view menus.

Battery level (3)—A higher bar indicates more power in the battery.

Right selection key (4)—Press to access menu shortcuts. See [“My menu settings”](#), p. 27.


■ Quick keys


In standby mode, use the quick keys as follows:


- Scroll up to access the call register.
- Scroll down to access the contacts list.
- Scroll left to write a text message.
- Scroll right to access the month view. See [“Calendar”](#), p. 32.
- Press the call key to access a list of previously dialled numbers.
- Briefly press the end key to access a list of profiles. See [“Profiles”](#), p. 21.


■ Indicators and icons


Depending on your wireless service provider or network operator and the model number of your device, some or all of the following indicators and icons may appear in standby mode.


 You have new text. See [“Text entry”](#), p. 10.


 You have new voice messages. Voice messages is a network service.

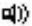
 Device keypad is locked. See [“Lock the keypad \(keyguard\)”](#), p. 9.


 Device is set to the silent profile. See [“Profiles”](#), p. 21.


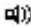
 Alarm clock is set to on. See [“Alarm clock”](#), p. 29.


 Countdown timer is running. See [“Countdown timer”](#), p. 33.


 Stopwatch timer is running in the background. See [“Stopwatch”](#), p. 33.


 Integrated hands-free is active. See [“Loudspeaker”](#), p. 8.


 Timed profile is selected. See [“Profiles”](#), p. 21.

 or  An enhancement is connected to the device. See [“Enhancements”](#), p. 34.

 Voice privacy encryption is active in the network.

 You are in a digital network. See [“Network services”](#), p. vii.

 You are in a 1XRTT network. See [“Network services”](#), p. vii.

 You are roaming outside your home network.

■ Device menus

Device features are grouped according to function and are accessed through the main menus. Each main menu contains submenus and lists from which you can select or view items and personalise device features. Use the scroll method to access these menus and submenus.

Scroll method

1. Select *Menu* in standby mode.
2. Scroll up or down to the menu you want, and select it.
3. If the menu contains submenus, scroll to the menu you want, and select it.

Press the end key to exit a main menu or submenu.

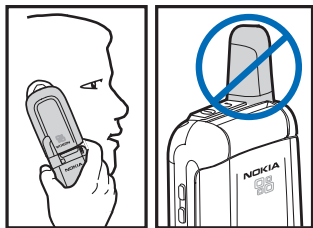
Shortcuts

The menus, submenus, and setting options are numbered. These numbers are called shortcuts.

In standby mode, select *Menu*; then, within 3 seconds, press the numbered keys associated with the menu function to view or activate it. Repeat for submenus.

2. Set up your device

■ The antenna



Your device has a fixed antenna located towards the top of the phone with the fold closed. Hold the phone with the antenna area pointed up and over your shoulder.

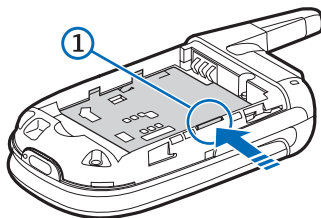
As with any other radio transmitting device, do not touch the antenna unnecessarily when the device is switched on. Contact with the antenna affects call quality and may cause the phone to operate at a higher power level than otherwise needed. Avoiding contact with the antenna area when operating the phone optimises antenna performance and battery life.

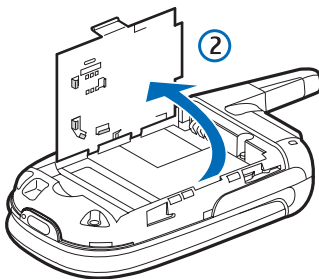
■ Insert the UIM (SIM) card and battery

Before installing the UIM (SIM) card, always make sure that the phone is switched off and the cover removed. Keep all UIM cards out of the reach of small children. For availability and information on using UIM card services, contact your UIM card vendor. This may be the service provider, network operator, or other vendor.

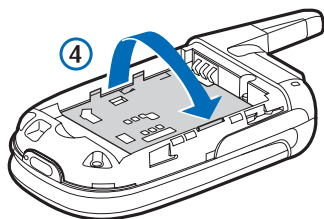
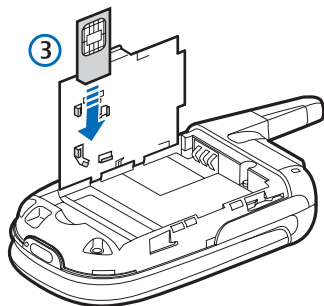
Insert the UIM card

1. Open the UIM holder: press the release button (1), and lift the holder up (2).





2. Insert the UIM card into the holder (beveled corner last) with the gold-coloured contacts facing down, matching up with the gold-coloured contacts on the phone (3). Close the holder (4).



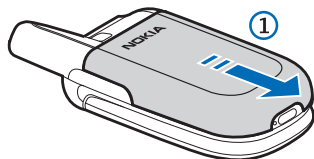
■ Insert the battery



Note: Always switch off the power and disconnect the charger and any other device before removing the cover. Avoid touching electronic components while changing the cover. Always store and use the device with the cover attached.

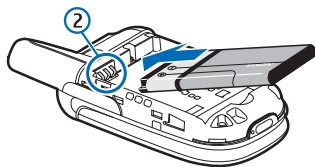
Always use original Nokia batteries. See "[Battery information](#)", p. 35.

Slide the back cover off to remove it (1).

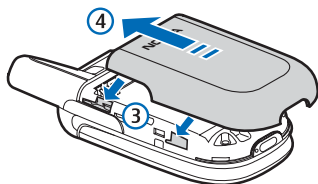


Set up your device

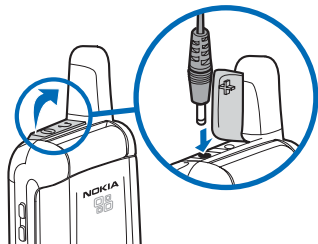
Insert the battery so that the gold-coloured connectors on the battery align with the connectors on the device (2).



Replace the back cover: align the catches (3) together, and slide the cover (4) forward.



Charge the battery



1. Plug the charger transformer into a standard ac outlet.

2. Open the rubber cover located at the top of the phone. Connect the charger plug into the connector in the device.

The battery indicator bar starts scrolling. When the battery is fully charged, the bar stops scrolling.

3. Disconnect the charger from the device and the ac outlet.

Switch on or off



Warning: Do not switch the device on when wireless phone use is prohibited, or when it may cause interference or danger.

The on-off function for this device is combined with the end key. To switch the device on or off, press and hold the end key. When you switch off the device, the profiles list is displayed before the device switches off.

When you switch the device on, it may request a PIN or security code. Enter the code and select **OK**. The preset security code is 12345. For information about device codes, see "[Security settings](#)", p. 25.

If the device displays **Insert SIM** even though the SIM (UIM) card is properly inserted, or **SIM card rejected**, contact your network operator or service provider.

■ Make a call

Use the keypad

- Open the device, and enter the phone number, including the area code.
To delete a character to the left of the cursor, select *Clear*.
- Press the call key. Press the volume keys to adjust the volume during the call.
- Press the end key, or close the fold to end the call or to cancel the call attempt.

Use the contacts list

To enter a number into the contacts list, in standby mode, select *Menu > Contacts*, and enter the name and phone number. See “[Contacts list options](#)”, p. 18.

In standby mode, scroll down to find the name or number you want. Press the call key to call the number.

Redialling a number

To redial one of the last 20 phone numbers that you have called, press the call key, scroll to the desired name or number, and press the call key again.

Speed dialling

Speed dialling must be switched on before you can use it. To switch it on, select *Menu > Contacts > Speed dials > On*.

You can set keys 2–9 as speed dialling keys. After you assign a number to a key, press and hold the key in standby mode to make a call, or press the number and the call key.

Assign a number to a key

1. Select *Menu > Contacts > Speed dials > Edit*.
2. Scroll to the desired key, and select *Assign*. If a phone number is already assigned, select *Options* to view, change, or delete the assignment.
3. Select *Assign to SMS* for text messaging or *Assign to call* for voice calls.

■ Answer calls

Answer a call

Open the fold and press the call key. If you do not press the call key, the call goes to your voice mailbox. To decline a call without answering it, open the fold and quickly close it, or press the end key.

Adjust the volume during a call

To increase or decrease the volume during a call, press the top or bottom of the volume key. When adjusting the volume, a bar chart indicates the volume level.

Loudspeaker



Warning: Do not hold the device near your ear when the loudspeaker is in use because the volume may be extremely loud.

- To activate the loudspeaker during a call, select **Loudspeaker** and close the fold.
- To deactivate the loudspeaker during a call, open the fold and select **Handset**. The loudspeaker is automatically deactivated when the call ends.

The loudspeaker is deactivated when a call (or call attempt) ends or when certain enhancements are connected.

Options during a call

Select **Options** during a call to access in-call functions. Many of these are network services. Check with your network operator for more information.

Voice mail

Voice mail is a network service.

For more information, and to receive your voice mailbox number, contact your network operator.

To listen to your voice mail, press and hold 1. You may need to enter the number when calling for the first time. To save the voice mailbox number, see "**Save voice mailbox number**", p. 14.

To divert calls to your voice mailbox, see "**Call settings**", p. 22.

Number screening

You can set your device to screen calls and messages from specific numbers. When you receive a call from a screened number, there is no ringing tone or vibration, regardless of the selected profile. You can screen up to 10 numbers. Screened messages are stored in **Menu > Messages > Screened messages**. See "**Screened messages**", p. 13. Use the **No screening** contact list option to enter a number for screening. See "**Contacts list options**", p. 18.



■ Lock the keypad (keyguard)

The keypad lock protects the device from accidental key presses. To lock or unlock the keypad, press the left selection key and quickly press *.

Keyguard is not activated when you close the fold.

To answer a call when the keyguard is on, press the call key. When you end or decline the call, the keypad automatically relocks. When the keyguard is on, calls may be possible to the official emergency number programmed into your phone.

3. Text entry

You can enter text and numbers in two ways: traditional text input indicated with , or predictive text input indicated with .

■ Traditional text input

- Press a key once to insert the first letter on the key, twice for the second letter, etc. If you pause briefly, the last letter in the display is accepted and your device awaits the next entry.
- To add a letter that is on the same key as the previous letter, scroll up or down (or wait for the cursor to appear), and enter the next letter.

Tips for writing text

- Press 0 to enter a space and 1 to enter a period (.).
- To move the cursor left or right, scroll left or right.
- To delete the character to the left of the cursor, select *Clear*. To clear the screen, select and hold *Clear*.
- To switch between letters and numbers, press and hold #.
- To enter a number, press and hold the desired key.

- To enter a special character, press and hold *, scroll to the character you want, and select *Use*. In traditional text entry, you can also enter some punctuation marks and other special characters by pressing 1 repeatedly.
- To switch between upper and lower case or between traditional and predictive text, press # repeatedly. The indicator at the top of the display shows which mode is active.

■ Predictive text input

Predictive text input allows you to write messages quickly using your keypad and the built-in dictionary. It is much faster than traditional text entry.

Activate or deactivate

To activate predictive text, at any text entry screen, select *Options > Dictionary* and the desired language.

To revert to traditional text entry, select *Options > Predictive text > Dictionary off*.

Text entry

- For each letter of the word that you want to spell, press the corresponding key on your keypad only once, even if the letter you want is not the first letter on the key. The device guesses the word you are trying to spell.
- If a displayed word is not correct, press * to see other matches.
- Press 0 to enter a space and begin writing the next word.
- If ? appears after a word, select *Spell*, enter the word using traditional text entry, and select *OK*.
- Press 1 to insert a period into your message.
- Press and hold * to display special characters.
- Press # to switch between sentence, upper and lower case; and, if a language is selected, press # twice to switch between traditional input and predictive text modes.

4. Messages



If you have subscribed to a messaging service through your wireless provider, you can send and receive messages to compatible devices that also subscribe to a compatible message service.

■ Write messages

1. In standby mode, select *Menu* > *Messages* > *Create message*, and enter the message.

The number of available characters are shown on the top right of the display.


2. Select *Options* to access other functions.
3. Select *Options* > *Send*, to enter the recipient's phone number, and *Search* to search it in contacts. Select *OK*.

You can also select *Options* > *Sending options* > *Send to many* or *Send to list*.



Note: When sending messages, your device may display *Message sent*. This is an indication that the message has been sent by your device to the message centre number programmed into your device. This is not an indication that the message has been received at the intended destination. For more details about messaging services, check with your service provider.

Read messages (Inbox)

When you receive text messages in standby mode, the number of new messages and the new message icon () are shown on the display.

1. Select *Show* to display the messages.

To display the messages later, press *Exit*. When you want to read the message, select *Menu* > *Messages* > *Inbox* and the message you want to read.

2. Scroll up and down to browse through the message.

While reading the message, select *Options* for other functions.

Send items and drafts

The *Sent items* folder stores copies of the messages that you have sent. The *Drafts* folder stores messages that you saved while you were writing them. To save a message while writing, select *Options > Save message*.

While viewing a message, select *Options* for other functions.

Distribution lists

If you need to send messages frequently to a fixed group of recipients, you can define a distribution list and use it to send a message. You can define up to 6 distribution lists, each with up to 10 recipients. The device sends a text message to each recipient separately. Contacts removed from the contact list are automatically removed from their distribution lists.

Define a distribution list

1. In standby mode, select *Menu > Messages > Distribution lists*. Highlight an empty list and select *Options > Add list*.
2. Enter a name for the list, and select *OK*.
3. To add contacts to this list, select *Options > View list > Options > Add contact* and the contact or contacts to be added to the list.

4. When you have added your contacts, select *Back*.

Send a message to a distribution list

1. In standby mode, select *Menu > Messages > Create message*.
2. Select *Options > Sending options > Send to list*, the desired distribution list, and *OK*.

If a message is not sent to one or more recipients, a report is displayed listing the number of failures and successful sendings.

- Select *Resend* to resend the message to the failed recipients.
- Select *View* to view the list of failed recipients.

Screened messages

You can view a message sent by a contact in your screened list.

In standby mode, select *Menu > Messages > Screened messages* and the desired message. While viewing the message:

- Select *Options > Delete*, to delete the message.
 - Select *Options > Delete from list*, to delete the number from the screened numbers list.
- For information on number screening, see "[Contacts list options](#)", p. 18.

Delete messages

In standby mode, select *Menu* > *Messages* > *Delete messages* > *All read*, *Inbox*, *Drafts*, *Sent items*, or *Screened msgs*. Select from some or all of the following options: *One by one*, *All read*, or *All unread*. Select *OK* at the prompt.

Message counter

1. Select *Menu* > *Messages* > *Message counter*.
2. Scroll down to view the numbers of sent and received messages.
3. To reset message counters, select *Clear counters* and the counter that you want to reset.

The *Message counter* submenu is also located under the *Call register* main menu.

Message settings

Select *Menu* > *Messages* > *Message settings* and one of the following:

Templates—View or edit a preset message templates.

Smileys—Use preset smileys, such as :-), in messages. You can create and edit smileys but may only delete the smileys you created.

Callback number—Include a callback number to your messages.

Signature—Add a signature file to your messages. Select signature text to create or edit your signature.

Select *Include signature* > *On* or *Off* to set automatic signature insertion on or off.

Delivery reports—Request the network to send delivery reports for your sent messages (network service). Select *On* or *Off*.

No. screening—View the screened numbers list, or add a number to the list. See "*Contacts list options*", p. 18.

Voice mailbox

Voice mailbox is a network feature. When you receive a voice message, your device displays a notification and may beep or vibrate. If you receive more than one message, your device shows the number of messages received.

Save voice mailbox number

1. In standby mode, select *Menu* > *Messages* > *Voice mailbox* > *Voice mailbox number*.
2. If the box is empty, enter the voice mailbox area code and number, and select *OK*.

Listen to your voice messages

Dial your voice mailbox number using one of these methods: dial the number using the keypad, press and hold 1, or select *Listen* if there is a notification message in the display.

In standby mode, select *Menu > Messages > Voice mailbox > Listen to voice messages*.

When you connect and the prerecorded greeting begins, follow the automated instructions to listen to your voice messages.

Clear voice mail icon

You can clear the voice mail notification from the display. Select *Menu > Messages > Voice mailbox > Clear voice mail icon* to clear the voice mail icon from standby mode and set the number of voice mail messages to 0.

5. Call register



Call register records the phone numbers of missed, received, and dialed calls, the approximate length of your calls, and the number of sent and received messages. For call register to work properly, the following conditions must be met:

- You must be in a digital network, your service provider must support caller ID, and it must be enabled in the device.
- Your calls cannot be blocked.
- Your device must be on and within the service area or in a compatible network if roaming.

■ Check missed, received, or dialed calls

1. In standby mode, select *Menu* > *Call register* > *Missed calls*, *Received calls*, or *Dialed numbers*.
2. Scroll through the list of numbers and highlight your selection.
3. Select *Options* and one of the following:
View number—View the number. (The caller's name and number must be stored in the contact list.)

Call—Dial the number from the call register.

Card call—Dial the sequence for your calling card with the phone number. Select a card from the list. To enter information for a card, see “*Call settings*”, p. 22.

Send message—Send a text message to the person who called you or whom you called.

Time of call—Show the time when the call was connected.

Edit number—Edit the number and save it with a name to your phone book.

Save—Enter a name for the number and save both to your phone book.

Delete—Erase the number from the call list.

Add to scrn. list—Add number to list of screened numbers.

■ Delete recent call list

You cannot undo this operation.

Select *Menu* > *Call register* > *Delete recent call lists* > *All*, *Missed*, *Received*, or *Dialed*.

■ Call duration

Your device tracks the approximate amount of time you spend on each call.



Note: The actual invoice for calls and services from your service provider may vary, depending upon network features, rounding off for billing, taxes, and so forth.

Select *Menu > Call register > Call duration* and one of the following:

Duration of last call—Show the approximate duration of the last call.

Duration of received calls—Show the approximate duration of all received calls.

Duration of dialed calls—Show the approximate duration of all calls dialled.

Duration of all calls—Show the approximate duration of all calls that have been made and received since you reset the timers.

Clear timers—Clear all call timers for the currently selected phone number. (Your device includes separate timers for each number used.) You need to enter your security code to clear timers. This action cannot be undone.



Note: Some timers may be reset during service or software upgrades.

■ Message counter

The *Message counter* menu is also located under *Messages*.

See "*Messages*", p. 12.



6. Contacts



You can save names and device numbers in device memory. The device memory can store up to 200 names.

■ Search for a name and phone number

1. In standby mode, select *Menu* > *Contacts* > *Search*.
2. Enter the first one or more characters of the name, and scroll to find the name.
3. To call the contact, press the call key.
4. Select *Details* > *Options* and the action you want to apply to the contact.

If the name or phone number is saved in UIM card memory,  is displayed at the upper right corner of the screen; if it is saved in device internal memory,  is displayed instead.

■ Contacts list options

To access contacts options, in standby mode, select *Menu* > *Contacts*.

The following options are available in the *Contacts* menu:

Search—Search for a name in the contacts list.

Add contact—Save names and phone numbers in the phone book.

Delete—Delete names and phone numbers from the phone book one by one, or all at once.

Copy—Copy contacts from the phone contacts memory to the UIM card memory, or vice versa.

Settings—Modify the contacts settings.

Speed dials—Activate the speed dials feature, and edit the number assigned to each of the speed dial keys.

No. screening—View the screened numbers list, or add a number to the list. To add a number, select *Menu* > *Contacts* > *No. screening* > *Options* > *Add number*, enter the number, and select *OK*. To delete a number from this list, select the number and *Options* > *Delete from list*.

My number—Display your phone number.



Note: This is a network operator dependent service.

■ Contacts settings

In standby mode, select *Contacts > Settings* and one of the following:

Memory in use—Select whether the names and phone numbers are saved in *UIM card* or *Phone*. Note that when you change the SIM/UIM card, *SIM/UIM card* memory is automatically selected.

Contacts view—Specify how names and numbers are shown in contacts list.

Memory status—Check how many names and phone numbers are already saved and how many can still be saved in each phone book.

7. Settings



In this menu, you can adjust various phone settings. To reset some menu settings to their default values, select *Restore factory set*.

■ Tone settings

From this menu, you can adjust the ringing volume, keypad tones, and other tone settings for the currently active profile. See “[Personalise a profile](#)”, p. 21.

Select *Menu > Settings > Tone settings* and one of the following:

Ringing tone—Set the tone that you hear when you receive a call.

Ringing volume—Set the volume level for the ringing and message alert tones.

Tone for no caller ID—Assign a specific ringtone to incoming calls for which the caller ID is unknown or unavailable. This ringtone can also be switched on (*Special*) or off (*Default*).

Vibrating alert—Set the device to vibrate when you receive a call or a text message. The vibrator does not operate when the device is connected to a charger.

Message alert tone—Set the tone that you hear when you receive a message.

Keypad tones—Set the volume for keypad tones.

Warning tones—Set the device to sound tones (for example, when the battery is almost discharged).

■ Display settings

Select *Menu > Settings > Display settings* and one of the following:

Themes—Choose a theme to personalise the appearance of your device display screen. Themes control the display background, the wallpaper, and the appearance of the signal and battery bars in standby mode. Scroll to the desired theme, and select *Options* and one of the following:

- *Activate > For current profile or For all profiles*.
- *Preview*—View the appearance of the theme.
- *Edit*—Select the wallpaper, the menu background, and the signal and battery bars.

Menu view > List or Grid—Set the main menu display format.

Power saver clock—Set the device to show the digital clock and all the main display icons as a screen saver. The displayed icons indicate missed

calls, keypad lock, silent mode, and received messages.

Backlight time—Select whether the backlights are switched on for 15 seconds (*Normal*), for 30 seconds (*Extended*), or not at all (*Off*). Even if the backlight is set to off, it stays on for 15 seconds when the device is switched on.

Brightness—Scroll left and right to modify the brightness of the display.

■ Profiles

You can personalise the device for different events and environments. After you have personalised a profile, you can activate the profile whenever you want to use it.

Activate

In standby mode, select *Menu* > *Settings* > *Profiles*, the desired profile, then *Activate*. You can also briefly press the end key to scroll through and activate a profile.

Personalise a profile

In standby mode, select *Menu* > *Settings* > *Profiles*, the desired profile, then *Personalise*. Select the option you want and follow the prompts.

You can change the settings of the currently selected profile in this menu and can change some or all of the settings in *Tone settings* (see "*Tone settings*", p. 20) and *Display settings* (see "*Display settings*", p. 20).

Set a timed profile

Timed profiles can be used to prevent missed calls. For example, you attend an event that requires your device be set to *Silent* before the event starts, but you forget to return to the previous active profile until long after the event. During this time, you have missed several calls because the ringing tone was silent.

You can set a timed profile to expire after any length of time up to 24 hours. When the profile expires, your device automatically returns to the default profile.

1. In standby mode, select *Menu* > *Settings* > *Profiles*, the desired profile, then *Timed*.
2. Enter the time for the profile to expire, and select *OK*.

The profile you set for expiration is now active and appears in standby mode along with a small clock icon.

■ Time settings

Select *Menu > Settings > Time settings* and one of the following:

Clock—Set the device to show or hide the current time in standby mode, adjust the time, and select the 12- or 24-hour time format. If the battery was removed from the device, you may need to set the time and date again.

Date setting—Set the date. If the battery was removed from the device, you may need to set the date again.

Auto-update of date and time—Set the device to update the date and time from the network when you turn the device on (network service). If the clock in your device is 30 seconds or more off the network time, the device will be updated automatically to reflect the network time. Select *On*, *Confirm first*, or *Off*. If you select *Confirm first*, the network requests confirmation before updating the time. You can accept or decline the update.

The automatic update of date and time does not change the time you have set for the alarm clock or the reminder notes. Updating may cause some alarms to expire without sounding.

■ Call settings

Select *Menu > Settings > Call settings* and one of the following:

Fold call handling—Set your device for *Delayed answering*, *Instant answering*, or *Off*.

Automatic redial—Set your device to redial up to 10 times after an unsuccessful call attempt. Select *On* or *Off*.

Call summary—Switch the report of approximate call time *On* or *Off* after calling.

No. screening—Assign or delete a number from the *No. screening* list. See "*Number screening*", p. 8.

Auto. serv. upd.—Automatically update call settings.

Calling card—Set your device to use your calling card. To enter the calling card information, select *Menu > Settings > Call settings > Calling card > Options > Add new* or *Edit* select your card sequence type, and enter the information. Select *OK* to confirm. Select *Card name*, enter the card name, and select *OK*. For information on making a call. See "*Calling cards*", p. 23.

Int. dial. prefix—Stores an international dialling prefix (this feature is network operator dependent). Enter the international dialling prefix, and select **OK**. To use the prefix, in standby mode, press * twice to use +, and enter the phone number.

In-call timer—Switch the display of call time **On** or **Off** while calling.

Calling cards

If you use a calling card for long distance calls, save the calling card number in your phone. The phone can store up to four calling cards. Contact your calling card company for more information.

Save calling card information

1. In standby mode, select **Menu** > **Settings** > **Call settings** > **Calling card**.
2. Enter your lock code, and select **OK**. See "Security settings", p. 25.
3. Scroll to an empty card memory locations, select **Options** > **Add new**, and enter the card name.
4. Select one of the following sequence types:

Access no. + phone no. + card no.—Dial the 1-800 access number, phone number, then enter the card number (plus PIN if required).

Access no. + card no. + phone no.—Dial the 1-800 access number, card number (plus PIN if required), then enter the phone number.

Prefix + phone no. + card no.—Dial the prefix (numbers that must precede the phone number) and phone number, then enter the card number (plus PIN if required).

5. Enter the required information (access number or prefix and card number), and select **OK** to confirm your entries.

Update calling card entry

To update an existing card entry:

1. In standby mode, select **Menu** > **Settings** > **Call settings** > **Calling card**.
2. Scroll to the card you wish to update.
3. Select **Options** > **Edit** > **Dialling sequence**.
4. Enter the required information (access number or prefix and card number), and select **OK** to confirm your entry.

Make calls

After you have saved your calling card information in your phone, make a call with your calling card.

1. In standby mode, select *Menu* > *Settings* > *Call settings* > *Calling card*.
2. Enter your security code, and select *OK*. See "Security settings", p. 25.
3. Scroll to the calling card of your choice, select *Options* > *Select* > *OK*.
4. Press the end key to return to standby mode and enter the phone number, including any prefix (such as 0 or 1) that your calling card may require when you make a calling card call. See your calling card for instructions.
5. Press and hold the call key for a few seconds until *Card call* is displayed.
6. When you hear the tone or system message, select *OK*.

Phone settings

Select *Menu* > *Settings* > *Phone settings* and one of the following:

Language—Select a language for the display texts.

Automatic keyguard—Select *On* when *Set delay* appears, enter the time, and select *OK*. You can set the time from 10 seconds to 60 minutes.

To deactivate the automatic keyguard, select *Off*. It may be possible to dial the emergency number programmed into your device when the keyguard is on.

DTMF tones—Select the tones that sound when you press the keys on your keypad: *DTMF tone length* or *Manual DTMF tones*.

Start-up tone—Switch the tone *On* or *Off* that sounds when the phone is switched on.

Welcome note—Enter a message that will be shown briefly on the display when the device is switched on.

Banner—Set the device to display the operator logo (*Default*) or your own message (*Personalise*) when the device is in the idle state. This is a network operator dependent feature.

Confirm UIM service actions—Set the UIM card services.

■ Security settings

Your device uses codes to help prevent unauthorised use:

- The security code, supplied with the device, helps to protect your device against unauthorised use. The preset code is 12345.
- The PIN code, supplied with the UIM card, helps to protect the card against unauthorised use. If you enter the PIN code incorrectly three times in succession, the UIM card is blocked. You must enter the PUK code to unblock the UIM card and set a new PIN code.
- The PUK and code may be supplied with the UIM card. If this is not the case, contact your local network operator.
- The lock code protects your phone from unauthorised outgoing calls or unauthorised access to information stored in the device. The preset code is 1234.

When security features that restrict calls are in use (such as call barring), calls still may be possible to the official emergency number programmed into your device.

Select **Menu > Settings > Security settings** and one of the following:

PIN code request—Set your device to ask for the PIN code of the UIM card when the device is switched on.

Some UIM cards do not allow this function at all times.

Call barring—Let you restrict incoming and outgoing calls.

Security level—The security level determines your access to features when a non-owner UIM card is used. A non-owner UIM card is one (other than the original) that is inserted after you power off the device. There are three security levels:

- **None**—Owner and non-owner cards are treated the same.
- **Memory**—The device asks for the security code when the UIM card memory is selected, and you want to change the memory in use or copy from one memory to another.
- **Phone**—The security code is required whenever a new UIM card is inserted.

When you change the security level, all the recent calls lists may be cleared, including missed calls, received calls, and dialled numbers.

Change access codes—Let you change the security code or PIN code. These codes can include the numbers 0 to 9 only.

Avoid using access codes similar to the emergency numbers, such as 111 or 000 or 911, to prevent accidental dialling of the emergency number.

Voice privacy—Let you protect the privacy of your current phone conversation from other callers placing phone calls on your network. Select *On* or *Off*.

■ Network settings

You can set your device to roam or search for another network when you are not in your home area. Your device is set to search for the most cost-effective network. These options are network operator dependent and may differ from those described.

In standby mode, select *Menu > Settings > Network settings > Network*. Select *Home only* to make and receive calls in your home area only, or *Automatic* to search for service in another digital network. The roaming rate applies when not in the home service area. Press *OK*, if necessary, to confirm the activation.

Network feature setting

Store a feature code

Feature codes can be set for *Call divert*, *Call waiting*, and *Send my caller ID with next call* network services.

1. In standby mode, select *Menu > Settings > Network settings > Network feature setting* and an option.

2. Select an option within that service. For example, *Call divert > Divert all voice calls > Activate*.
3. At the *Feature code*: prompt, enter the appropriate feature code (5 characters or less).

You can enter other feature codes, or press the end key to return to standby mode. When you enter a network feature code, the feature is visible in the *Call settings* menu.

Call divert

Call divert tells your network to redirect incoming calls to another number. Call divert is a network service and may not work the same in all networks, so contact your wireless provider for availability.

1. In standby mode, select *Menu > Settings > Call settings > Call divert* and one of the following options:

Divert all voice calls—Divert all calls to the number you specify.

Divert if busy—Divert incoming calls when you are in a call.

Divert if not answered—Divert incoming calls to another number if you are unable to answer.

You can set a delay before diverting takes place.

Divert if out of reach—Divert incoming calls to the number you specify if your phone is out of network.

Cancel all diverts—Cancel any call diverting options you have set. This option does not require that you perform step 2.

2. Select *Activate* > *OK* to enter the number to which calls are diverted or *Cancel*.

Call waiting

If your wireless provider supports this feature, call waiting notifies you of an incoming call even while you are in a call. You can then accept, decline, or ignore the incoming call.

1. In standby mode, select *Menu* > *Settings* > *Call settings* > *Call waiting* > *Activate*, *Cancel*, or *Cancel for next call* and enter a number at the prompt.
2. During a call, select *Answer*, or press the call key to answer the waiting call, and put the first call on hold.
3. Press the end key to end the active call and the held call.

Send my caller ID

If your wireless service provider or network operator supports this feature, you can prevent your number from appearing on the receiving party caller ID.

In standby mode, select *Menu* > *Settings* > *Call settings* > *Send my caller ID with next call* and the number you are calling at the prompt, or select *Off* to turn this feature off. This feature allows you to display your number on the receiving party's caller ID for the next call only.

Own number selection

To view your own phone number or, if your phone can use more than one number, to select the active number, in standby mode, select *Menu* > *Settings* > *Network settings* > *My number selection*.



Note: This is a network operator dependent service.

My menu settings

When you press the right selection key in standby mode, the device displays a list of shortcuts to various functions. To define the functions to be shown in this list, select *Menu* > *Settings* > *R. navigation key settings* and one of the following:

Select options—Scroll to each function that you want as a shortcut, and select *Mark*. The functions are listed in the shortcut list in the order you select them. When you have selected all desired functions, select *Back* > *Yes*. To exit the menu without saving, select *Back* twice.

Organise—Scroll to the function you want to move. Select *Move* and the moving option that you want. When you are finished organising functions, select *Back* > *Yes* to save the changes. To exit the menu without saving, select *Back* and *No*.

■ Restore factory settings

You can reset some of the menu settings to their original values.

1. In standby mode, select *Menu* > *Settings* > *Restore factory set*.
2. Enter the security code (the default security code is 12345), and select *OK*.

The names and phone numbers saved in the phone book are not deleted.

8. Tools and games

■ Alarm clock



You can set the alarm to sound at the time you want just once or repeatedly (for example, every working day). Select *Menu > Alarm clock* and one of the following options:

Alarm time—Enter the time for the alarm, and select *OK*.

Alarm tone—Choose the tone for the alarm.

Repeat alarm—Select *Alarm once* to set the alarm to sound only once, or *Repeat alarm* to select the days on which you want the alarm to sound.

When the alarm sounds, press the end key to stop it. If you select *Snooze*, the alarm stops and rings again in 10 minutes.

If the alarm time is reached while the device is switched off, the device switches itself on and starts sounding the alarm tone. If you select *Stop*, the device asks whether you want to activate the device for calls. Select *No* to switch off the device, or select *Yes* to make and receive calls. Do not select *Yes* when wireless device use may cause interference or danger.

■ Radio



Warning: Listen to music at a moderate level. Continuous exposure to high volume may damage your hearing. Do not hold the device near your ear when the loudspeaker is in use, because the volume may be extremely loud.

Your device has a built-in FM radio that you can play through a headset. With your headset connected, select *Menu > Radio*. If you are playing the radio for the first time, the radio selects the default channel, 87.50 MHz; otherwise, the radio plays the last channel you selected.

To tune to a channel using automatic tuning, select *Options > Auto-tuning*, and scroll up to activate it. To manually tune to a specific channel, select *Options > Manual tuning*, and scroll up or down to the desired channel. To switch off the radio, select *Options > Turn off*, or press the end key.

■ Reminders



You can save short text notes with an alarm. The alarm is activated when the set date and time is reached.

Select *Menu > Reminders > Add new*, *View all*, *Calendar*, *Delete*, or *Alarm tone*.

When the reminder time is reached, to stop the alarm, press the end key. If you select *Postp.*, the alarm sounds again in 10 minutes.

While viewing a reminder, you can select *Options > Delete* or *Edit*.

■ Games



The device has several games. Each game is provided with a brief help text.

To play a game, select *Menu > Games* and the desired game. Select *Instructions* for an explanation of how to play the game and how to use the other options.

To set the game settings, select *Games > Settings > Game sounds* or *Shakes*.

When *Warning tones* is off, there may be no sound even if *Game sounds* is on. When *Vibrating alert* is off, the device does not vibrate even if *Shakes* is on.

9. Extras



■ Calculator

The device is provided with a calculator that can also be used for approximate currency conversions.

Select *Menu > Extras > Calculator*.



Note: This calculator has limited accuracy and is designed for simple calculations.

Make a calculation

1. Enter the first number in the calculation.

Press a number key (1-9) to insert a digit. Press # to insert a decimal point. Select *Clear* to delete the last digit. To change the sign, press *.

Scroll up or down to select between +, -, x, and /.

2. Enter the second number in your calculation, and select *Equals*.

Select *Clear* to clear the display for a new calculation.

■ Converter

You can convert values between different units of measure.



Note: This converter has limited accuracy and is designed for simple calculations.

To perform a conversion, in standby mode, select *Menu > Extras > Converter > Temperature, Weight, Length, Area, Volume, Currency, or My conversions* and the unit for conversion. Enter a value to convert. To reverse the conversion, scroll up or down.

Select *Menu > Extras > Converter > Last 5 conversions* to display the last five conversions performed.

To enter your own conversion, select *Menu > Extras > Converter > My conversions*. Select an empty conversion combination and follow the prompts to enter the units and factor value.

Currency converter

To save the exchange rate, select *Menu* > *Extras* > *Converter* >

Currency > *Exchange rate* > *Foreign unit in domestic units* or *Domestic unit in foreign units*. Select *OK* and enter the value (press # for a decimal point). Select *OK* to save the exchange rate.

To make the conversion, enter the currency amount to be converted, and select *Currency* > *To home* or *To foreign*.

■ Spreadsheet

The spreadsheet lets you calculate your expenses on a daily or monthly basis. The daily spreadsheet can total expenses for up to a month, and the monthly spreadsheet can total expenses for up to a year.

1. Select *Menu* > *Extras* > *Spreadsheet* > *Daily account* or *Monthly account*, and scroll to highlight various cells in the spreadsheet.
2. With a cell highlighted, select *Options* and one of the following:
Edit—Edit an expense value, an expense category name, or the spreadsheet name (depending on where the cursor is when you select *Options*).

Add row or *Delete row*—Add a new expense category or delete an existing expense category.

Delete all data—Erase all the data in the current view.

Set row value—Insert the same value for each day or month on the selected expense category.

Save—Save the spreadsheet. If you modify a spreadsheet and then try to exit without saving, the device prompts you to save.

View details—View the details of the selected cell. To view details you can also press and hold #.

Sync. expense—Synchronise the values from a daily spreadsheet to the corresponding month in a monthly spreadsheet. This option is available only under *Monthly account*.

■ Calendar

To view a calendar for the current month, scroll right, or select *Menu* > *Extras* > *Calendar*.

Scroll to go to another date. Select *Back* to exit the calendar.

■ Countdown timer

Timer accuracy is not the same as that of a professional instrument.


Therefore, Nokia advises against its use for official competitions or any other event in which a high-precision device would be required to establish exact times.

The countdown timer provides general measurements for personal use that may vary from scientific measurements.

You can set an alarm to sound after a period of lapsed time.

1. Select *Menu > Extras > Countd. tim.*
2. Enter the countdown time (hh:mm), and select *OK*.
3. Enter a note for the countdown, if desired, and select *OK*.

While the timer is running, you can select *Menu > Extras > Countd. tim. > Change time* or *Stop timer*.

When the timer is running,  is shown in standby mode. When the alarm time is reached, a tone sounds, the display flashes, and the alarm note appears. Press any key to stop the alarm or select *Restart* to start the timer again for the same countdown time.


■ Stopwatch

The stopwatch can be used for time measurement, such as in sports.

Using the stopwatch or allowing it to run in the background when using other features increases demand on battery power and reduces battery life.

1. Select *Menu > Extras > Stopwatch > Start* to start timing.
2. Select *Stop* to stop timing.
3. When the timing is stopped, select *Options > Start, Reset, or Exit*.

If you select *Start*, timing continues from the previous stop time. *Reset* stops the current timing and sets the time to zero.

To set the timing to continue in the background, select *Back*. While the time is running,  flashes in standby mode.

■ UIM services



This menu appears only if your UIM card provides additional services. The name and contents of this menu depend on the services available.

For availability, rates, and information on using UIM services, contact your UIM card vendor or network operator.

10. Enhancements



Check the model number of any charger before use with this device. This device is intended for use when supplied with power from charger ACP-7, or other compatible charger.



Warning: Use only batteries, chargers, and enhancements approved by Nokia for use with this particular model. The use of any other types may invalidate any approval or warranty, and may be dangerous.

For availability of approved enhancements, please check with your dealer. When you disconnect the power cord of any enhancement, grasp and pull the plug, not the cord. See also "Insert the UIM (SIM) card and battery", p. 4 and "Charge the battery", p. 6.

A few practical rules about accessories and enhancements.

- Keep all accessories and enhancements out of the reach of small children.
- When you disconnect the power cord of any accessory or enhancement, grasp and pull the plug, not the cord.
- Check regularly that enhancements installed in a vehicle are mounted and are operating properly.
- Installation of any complex car enhancements must be made by qualified personnel only.

Power

- Standard Li-Ion Battery (BL-5C)
- Standard Travel Charger (ACP-7)
- Travel Charger (ACP-12)
- Charger (AC-1)

Audio

- Headset (HS-9)

Car

- Headrest handsfree (BHF-4)

11. Battery information

This section provides information about batteries, chargers, safety guidelines and technical information. Be aware that the information in this section is subject to change as batteries and chargers change.

■ Charging and discharging batteries

Your device is powered by a rechargeable battery. The full performance of a new battery is achieved only after two or three complete charge and discharge cycles. The battery can be charged and discharged hundreds of times but it will eventually wear out. When the talk and standby times are noticeably shorter than normal, replace the battery. Use only Nokia approved batteries, and recharge your battery only with Nokia approved chargers designated for this device.

If a replacement battery is being used for the first time or if the battery has not been used for a prolonged period, it may be necessary to connect the charger then disconnect and reconnect it to begin charging the battery.

Unplug the charger from the electrical plug and the device when not in use. Do not leave a fully charged battery

connected to a charger, since overcharging may shorten its lifetime. If left unused, a fully charged battery will lose its charge over time.

Use the battery only for its intended purpose. Never use any charger or battery that is damaged.

Do not short-circuit the battery. Accidental short-circuiting can occur when a metallic object such as a coin, clip, or pen causes direct connection of the positive (+) and negative (-) terminals of the battery. (These look like metal strips on the battery.) This might happen, for example, when you carry a spare battery in your pocket or purse. Short-circuiting the terminals may damage the battery or the connecting object.

Leaving the battery in hot or cold places, such as in a closed car in summer or winter conditions, will reduce the capacity and lifetime of the battery and its ability to charge. Always try to keep the battery between 59°F and 77°F (15°C and 25°C). A device with a hot or cold battery may not work temporarily, even when the battery is fully charged. Battery performance is particularly limited in temperatures well below freezing.

Do not dispose of batteries in a fire, as they may explode. Batteries may also explode if damaged. Do not provoke short circuits. Do not dispose as household waste. Dispose of batteries according to local regulations. Please recycle when possible. Do not dispose as household waste.

Nokia battery authentication guidelines

Always use original Nokia batteries for your safety. To check that you are getting an original Nokia battery, purchase it from an authorised Nokia dealer, look for the Nokia Original Enhancements logo on the packaging and inspect the hologram label using the following steps:

Successful completion of the four steps is not a total assurance of the authenticity of the battery. If you have any reason to believe that your battery is not an authentic original Nokia battery, you should refrain from using it, and take it to the nearest authorised Nokia service point or dealer for assistance. Your authorised Nokia service point or dealer will inspect the battery for authenticity. If authenticity cannot be verified, return the battery to the place of purchase.

Authenticate hologram

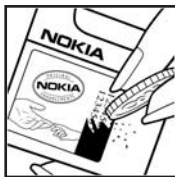
1. When looking at the hologram on the label, you should see the Nokia connecting hands symbol from one angle and the Nokia Original Enhancements logo when looking from another angle.



2. When you angle the hologram left, right, down, and up, you should see 1, 2, 3, and 4 dots on each side respectively.



3. Scratch the side of the label to reveal a 20-digit code, for example, 12345678919876543210. Turn the battery so that the numbers are facing upwards. The 20-digit code reads starting from the number at the top row followed by the bottom row.



4. Confirm that the 20-digit code is valid by following the instructions at www.nokiaoriginals.com/check.



To create a text message enter the 20-digit code, for example, 12345678919876543210, and send to +44 7786 200276.

To create a text message,

- For countries in Asia Pacific, excluding India: Enter the 20-digit code, for example, 12345678919876543210, and send to +61 427151515.
- For India only: Enter Battery followed by the 20-digit battery code, for example, Battery 12345678919876543210, and send to 5555.

National and international operator charges will apply.

You should receive a message indicating whether the code can be authenticated.

If you need assistance confirming the battery code, contact your local Nokia Care Centres listed at www.nokia-asia.com/carecentrelocator.

What if your battery is not authentic?

If you cannot confirm that your Nokia battery with the hologram on the label is an authentic Nokia battery, please do not use the battery. Take it to the nearest authorised Nokia service point or dealer for assistance. The use of a battery that is not approved by the manufacturer may be dangerous and may result in poor performance and damage to your device and its enhancements. It may also invalidate any approval or warranty applying to the device.

To find out more about original Nokia batteries, visit www.nokiaoriginals.com/battery.

■ Charging times

The following charging times are approximate with the BL-5C Li-Ion battery:

Travel Charger (ACP-12): Up to 1 hour 45 minutes

Standard Travel Charger (ACP-7): Up to 3 hours 45 minutes

■ Talk and standby times

Operation times are estimates only and depend on signal strength, network conditions, user habits (device use, features used, and number of idle hand-off), battery age and condition (including charging habits), temperatures to which the battery is exposed, and many other factors.

Talk time: Up to 3.5 hours

Standby time: Up to 7.5 days

12. Care and maintenance

Your device is a product of superior design and craftsmanship and should be treated with care. The suggestions below will help you protect your warranty coverage.

- Keep the device and all of its parts and accessories out of the reach of small children.
- Keep the device dry. Precipitation, humidity and all types of liquids or moisture can contain minerals that will corrode electronic circuits. If your device does get wet, remove the battery and allow the device to dry completely before replacing it.
- Do not use or store the device in dusty, dirty areas. Its moving parts and electronic components can be damaged.
- Do not store the device in hot areas. High temperatures can shorten the life of electronic devices, damage batteries, and warp or melt certain plastics.
- Do not store the device in cold areas. When the device returns to its normal temperature, moisture can form inside the device and damage electronic circuit boards.
- Do not attempt to open the device other than as instructed in this guide.
- Do not drop, knock, or shake the device. Rough handling can break internal circuit boards and fine mechanics.
- Do not use harsh chemicals, cleaning solvents, or strong detergents to clean the device.
- Do not paint the device. Paint can clog the moving parts and prevent proper operation.
- Use only the supplied or an approved replacement antenna. Unauthorised antennas, modifications, or attachments could damage the device and may violate regulations governing radio devices.
- Use chargers indoors.
- Always create a backup of data you want to keep, such as contacts and calendar notes, before sending your device to a service facility.

All of the above suggestions apply equally to your device, battery, charger, or any enhancement. If any device is not working properly, take it to the nearest authorised service facility for service.

13. Additional safety information

■ Operating environment

Remember to follow any special regulations in force in any area and always switch off your device when its use is prohibited or when it may cause interference or danger. Use the device only in its normal operating positions. This device meets RF exposure guidelines when used either in the normal use position against the ear or when positioned at least 1.5 cm away from the body. When a carry case, belt clip, or holder is used for body-worn operation, it should not contain metal and should position the device at least 1.5 cm away from your body.

In order to transmit data files or messages, this device requires a quality connection to the network. In some cases, transmission of data files or messages may be delayed until such a connection is available. Ensure the above separation distance instructions are followed until the transmission is completed.

Your device and its enhancements may contain small parts. Keep them out of the reach of small children.

■ Medical devices

Operation of any radio transmitting equipment, including wireless phones, may interfere with the functionality of inadequately protected medical phones. Consult a physician or the manufacturer of the medical device to determine if they are adequately shielded from external RF energy or if you have any questions. Switch off your phone in health care facilities when any regulations posted in these areas instruct you to do so. Hospitals or health care facilities may be using equipment that could be sensitive to external RF energy.

Pacemakers

Pacemaker manufacturers recommend that a minimum separation of 15.3 centimeters (6 inches) be maintained between a wireless phone and a pacemaker to avoid potential interference with the pacemaker. These recommendations are consistent with the independent research by and recommendations of Wireless Technology Research. To minimise the potential for interference, persons with pacemakers should do the following:

- Always keep the phone more than 15.3 centimeters (6 inches) from the pacemaker
- Not carry the phone in a breast pocket

- Hold the phone to the ear opposite the pacemaker to minimise the potential for interference

If you suspect interference, switch off your device, and move the device away.

Hearing aids

Some digital wireless phones may interfere with some hearing aids. If interference occurs, consult your network operator.

Vehicles

RF signals may affect improperly installed or inadequately shielded electronic systems in motor vehicles such as electronic fuel injection systems, electronic antiskid (antilock) braking systems, electronic speed control systems, air bag systems. For more information, check with the manufacturer or its representative of your vehicle or any equipment that has been added.

Only qualified personnel should service the phone, or install the phone in a vehicle. Faulty installation or service may be dangerous and may invalidate any warranty that may apply to the phone. Check regularly that all wireless phone equipment in your vehicle is mounted and operating properly. Do not store or carry flammable liquids, gases, or explosive materials in the same compartment as the phone, its parts, or enhancements. For vehicles equipped with an air bag, remember that an air bag inflates with great

force. Do not place objects, including installed or portable wireless equipment in the area over the air bag or in the air bag deployment area. If in-vehicle wireless equipment is improperly installed and the air bag inflates, serious injury could result.

Using your device while flying in aircraft is prohibited. Switch off your device before boarding an aircraft. The use of wireless teledevices in an aircraft may be dangerous to the operation of the aircraft, disrupt the wireless telephone network, and may be illegal.

Potentially explosive environments

Switch off your phone when in any area with a potentially explosive atmosphere and obey all signs and instructions. Potentially explosive atmospheres include areas where you would normally be advised to turn off your vehicle engine. Sparks in such areas could cause an explosion or fire resulting in bodily injury or even death. Switch off the phone at refuelling points such as near gas pumps at service stations. Observe restrictions on the use of radio equipment in fuel depots, storage, and distribution areas, chemical plants or where blasting operations are in progress. Areas with a potentially explosive atmosphere are often but not always clearly marked. They include below deck on boats, chemical transfer or storage facilities, vehicles using liquefied petroleum gas

(such as propane or butane), and areas where the air contains chemicals or particles such as grain, dust or metal powders.

■ Emergency calls



Important: Wireless phones, including this device, operate using radio signals, wireless networks, landline networks, and user-programmed functions. Because of this, connections in all conditions cannot be guaranteed. You should never rely solely on any wireless phone for essential communications like medical emergencies.

To make an emergency call, do the following:

1. If the phone is not on, switch it on. Check for adequate signal strength. Some networks may require that a valid UIM card is properly inserted in the phone.
2. Press the end key as many times as needed to clear the display and ready the phone for calls.
3. Enter the official emergency number for your present location. Emergency numbers vary by location.
4. Press the call key.

If certain features are in use, you may first need to turn those features off before you can make an emergency call. Consult this guide or your service provider for more information.

When making an emergency call, give all the necessary information as accurately as possible. Your wireless device may be the only means of communication at the scene of an accident. Do not end the call until given permission to do so.

■ Certification information (SAR)

THIS DEVICE MEETS INTERNATIONAL GUIDELINES FOR EXPOSURE TO RADIO WAVES

Your mobile device is a radio transmitter and receiver. It is designed and manufactured not to exceed the limits for exposure to radio frequency (RF) recommended by international guidelines (ICNIRP). These limits are part of comprehensive guidelines and establish permitted levels of RF energy for the general population. The guidelines were developed by independent scientific organisations through periodic and thorough evaluation of scientific studies. The guidelines include a substantial safety margin designed to assure the safety of all persons, regardless of age and health.

The exposure standard for mobile devices employs a unit of measurement known as the Specific Absorption Rate, or SAR. The SAR limit stated in the international guidelines is 2.0 watts/kilogram (W/kg)*. Tests for SAR are conducted using standard operating positions with the device transmitting at its highest certified

power level in all tested frequency bands. Although the SAR is determined at the highest certified power level, the actual SAR of the device while operating can be well below the maximum value. This is because the device is designed to operate at multiple power levels so as to use only the power required to reach the network. In general, the closer you are to a base station, the lower the power output of the device.

The highest SAR value for this device when tested for use at the ear is 0.78 W/kg.

SAR values may vary depending on national reporting and testing requirements and the network band. Use of device accessories and enhancements may result in different SAR values. Additional SAR information may be provided under product information at www.nokia-asia.com.

* The SAR limit for mobile devices used by the public is 2.0 W/kg averaged over 10 grams of body tissue. The guidelines incorporate a substantial margin of safety to give additional protection for the public and to account for any variations in measurements. SAR values may vary depending on national reporting requirements and the network band. For SAR information in other regions, please look under product information at www.nokia.com.

Index

A

- Access codes 25
- Activate predictive text 10
- Alarm clock 29
- Antenna 4
- Authenticate hologram 36
- Auto-update 22

B

- Back cover
 - remove 4
- Battery
 - charge 6
 - charge times 38
 - charging times 38
 - information 35
 - insert 5
 - remove 5
 - talk and standby times 38

C

- Calculator 31
- Calendar 32
- Call divert 26
- Call duration 17
- Call register 16
- Call settings 22
- Calling card
 - new entry 23
 - update 23
- Calling cards 23
- Calls
 - answer 7
 - contacts list 7
 - in-call options 8
 - make 7
 - redial 7
 - speed dialling 7
 - volume 8
- Care and maintenance 39
- Certification information (SAR) 42
- Charger
 - connect 6
 - times 38

Code

- PIN code 25
- PUK code 25
- security 25
- Contact
 - list options 18
- Contacts 18
 - search list 18
- Contacts list
 - settings 19
- Converter 31
- Countdown timer 33
- Currency converter 32

D

- Display settings 20
- Distribution lists 13
- Drafts 13
- Duration of calls 17

E

- Emergency calls 42
- Enhancements 34
- ESN viii
- Exchange rate 32

F

- Feature codes 26
- FM radio 29

G

- Games 30

H

- Help viii

I

- IMEI viii
- Indicators and icons 2

K

Keyguard 9

L

Loudspeaker 8

M

Mailbox

voice mailbox 14

Message counter 17

Messages

delete 14

distribution lists 13

drafts 13

read 12

screened 13

sent items 13

settings 14

write text messages 12

Model number viii

Month view 32

My menu settings 27

N

Nokia battery authentication
guidelines 36

Nokia support and contact
information viii

Number screening 8

O

Off switch 6

On switch 6

Own number 27

P

Phone settings 24

PIN code 25

Predictive text 10

Predictive text activation 10

Profiles 21

personalise 21

timed 21

PUK code 25

Q

Quick keys 2

R

Radio 29

Read message 12

Reminders

alarm clock 30

calendar 30

Restore factory settings 28

S

Safety v

important safety information 40

Screen calls 8

Screened messages 13

Scrolling 3

Search contacts 18

Security

code 25

Security settings 25

Sent items 13

Settings 20

call 22

display 20

my menu 27

network 26

phone 24

profiles 21

restore 28

security 25

timed 22

tone 20

Shortcuts 3

SIM card slot 4

Speed dialling 7

Spreadsheet 32

Standby mode 1

Standby time 38

Stopwatch 33

Switch phone off 6

Switch phone on 6

T

Talk and standby times 38

Talk time 38

Text entry 10

- Text input
 - predictive text 10
 - traditional 10
- Text messages 12
- Text writing tips 10
- Time settings 22
- Timed profiles 21
- Tone settings 20

U

- UIM card
 - insert 4
- UIM card slot 4
- UIM services 33

V

- View
 - dialed calls 16
 - missed calls 16
 - received calls 16
- Voice mail 8
- Voice mailbox 14
- Voicemail 14
- Volume
 - adjust 8
 - use loudspeaker 8

W

- Write messages 12
- Writing tips 10